

Understanding How Persons Change: From Observation to Intervention



**Society for Ambulatory Assessment
6th Biennial Conference
Syracuse, NY**

Conference Program

June 19th – 22nd, 2019



Society for Ambulatory Assessment

Ambulatory Assessment comprises the use of field methods to assess the ongoing behavior, physiology, experience and environmental aspects of people in naturalistic or unconstrained settings. Ambulatory Assessment uses ecologically-valid tools to understand biopsychosocial processes as they unfold naturally in time and in context.

Ambulatory Assessment covers a range of real-time data capture methodologies that originate from different scientific disciplines (psychology, medicine, computer science, etc.). These methodologies include but are not limited to:

- Experience sampling and ecological momentary assessment
- Repeated-entry diary techniques
- Monitoring of physiological function, in combination with or without physical behaviour
- Acquisition of ambient environmental parameters

THANK YOU TO OUR SPONSOR

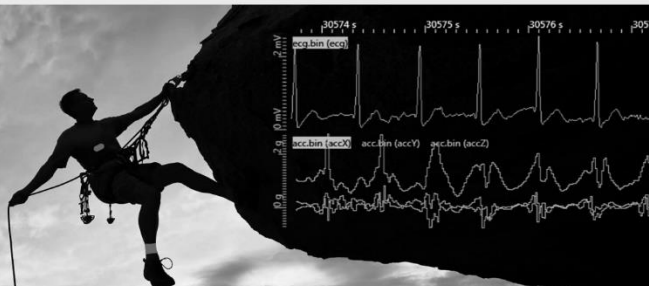
movisens, a German company that specializes in equipment for ambulatory assessment and ecologically momentary assessment research purposes. We produce research grade physiological sensors that capture high resolution ECG, electrodermal activity, and physical activity data for the analysis of psychophysiological parameters in everyday life, with sensors capable of integrating with our world class experience sampling (EMA) platform for interactive studies.



www.movisens.com

movisens provides ambulatory assessment and mobile monitoring products and services for science and research

measure here,
measure there,
measure everywhere





Joshua Smyth
President



Marieke Wichers
EC Member



Eco De Geus
Treasurer



Thomas Kubiak
Secretary/Membership
Officer



Andrea B. Horn
EC Member



Megan Robbins
EC Member



Julia Reichenberger
Student/Trainee Affairs



Emily Ansell
Conference Chair



Schedule at a Glance

Wednesday June 19 th	Thursday June 20 th	Friday June 21 st	Saturday June 22 nd
9:00AM-12:00PM Pre-Conference Workshops	8:00AM – 9:00AM Continental Breakfast	8:00AM – 9:00AM Continental Breakfast	8:00AM – 9:00AM Continental Breakfast
1:00PM – 5:00PM Pre-Conference Workshop	9:00AM – 10:15AM Keynote Speaker: <i>Timothy Trull, PhD</i>	9:00AM – 10:15AM Young Investigator Keynote Speaker: <i>Laura Bringmann, PhD</i>	9:00AM – 10:00AM Business Meeting
	10:15AM-10:30AM Coffee Break	10:15AM-10:30AM Coffee Break	10:00AM-10:15AM Coffee Break
	10:30AM - 12:00PM Symposiums/Paper Sessions	10:30AM - 12:00PM Symposiums/Paper Sessions	10:15AM – 11:45AM Symposiums/Paper Sessions
	12:00PM – 1:45PM Lunch Break	12:00PM – 1:45PM Lunch Break	12:00PM – 1:30PM Symposiums/Paper Sessions
	1:45PM – 3:15PM Symposiums/Paper Sessions	1:45PM – 3:15PM Symposiums/Paper Sessions	
	3:15PM – 3:30PM Coffee Break	3:15PM – 3:30PM Coffee Break	
	3:30PM – 5:00PM Symposiums/ Paper Sessions	3:30PM – 5:00PM Symposiums/Paper Session	
	5:00PM – 7:00PM Poster Session and Conference Reception	5:00PM- 6:00PM Social Hour/ Meet the Executive Committee	
		7:00PM Beak & Skiff Dinner *preregistration only	



Keynote Speakers

Thursday, June 20th

9:00AM - 10:15AM

Location: Skaneateles

Ambulatory assessment of psychopathology



Timothy Trull, PhD

University of Missouri

Friday, June 21st

9:00AM - 10:15AM

Location: Skaneateles

Network models in psychology – More than a pretty picture?



Laura Bringmann, PhD

University of Groningen, Psychometrics Statistics Department



Conference Miscellaneous

WIFI NETWORK: Meeting room name (e.g. Otisco)

WIFI PASSCODE: MSD1924

ABSTRACTS:

<http://repeatlab.syr.edu/saa2019/program/>

REGISTRATION:

The registration table is located in the Finger Lakes Foyer. Please check-in before attending any events. Hours for registration are:

Wednesday: 8:30 AM – 10:00AM & 12:30PM – 3:00PM

Thursday: 8:00AM – 12:00PM & 1:00PM – 5:00PM

Friday: 8:00AM – 12:00PM & 1PM – 4:00PM

CONFERENCE BADGE:

The conference sessions and locations are controlled entry. You will need to wear your badge to get inside, please be sure to keep your badge displayed.

***If you misplace your badge, please visit the registration table to obtain a replacement.**



Melbourne School of
Psychological Sciences



Society for Ambulatory Assessment Conference

15 – 18 January 2020 | Old Arts Building, University of Melbourne, Victoria, Australia

We are pleased to announce the Society for Ambulatory Assessment will hold a scientific conference at the University of Melbourne from 15 - 18 January 2020. We look forward to seeing you in Melbourne next summer!

Keynote speakers



Professor Nicholas Allen

Ann Swindells Professor of Clinical Psychology at the University of Oregon



Professor Simine Vazire

Professor of Psychology at the University of California, Davis



Professor Andrew T Campbell

Professor of Computer Science at Dartmouth College

With thanks to our conference partner:



For more information, visit www.saa2020.net



SAA

Society for Ambulatory Assessment

CONFERENCE DETAILS

Date:

15 – 18 January 2020

Abstract submissions:

Opens 7 May and closes 15 July 2019

Venue:

Old Arts Building, University of Melbourne, Victoria, Australia

Enquiries:

saa2020aus@gmail.com

More information:

www.saa2020.net



WEDNESDAY, JUNE 19 th	
<p>9:00AM – 12:00PM <i>Location: Keuka</i></p>	<p><u>Pre-Conference Workshop</u> (by registration only)</p> <p>Essentials of ecological momentary assessment: history, usage, design, analysis, and implementation</p> <p><i>Louis Tay PhD, Purdue University</i></p>
<p><i>Location: Conesus</i></p>	<p><u>Pre-Conference Workshop</u> (by registration only)</p> <p>MobileQ: A free, open-source, low-threshold platform for experience sampling research</p> <p><i>Peter Kuppens, Kristof Meers, Egon Dejonckheere, Marlies Houben, Nadja Bodner; KU Leuven – University of Leuven, Belgium</i></p>
<p>1:00PM – 5:00PM <i>Location: Conesus</i></p>	<p><u>Pre-Conference Workshop</u> (by registration only)</p> <p>Analyzing intensive longitudinal data with n=1 and multilevel autoregressive models</p> <p><i>Noémi Schuurman PhD, Tilburg University</i> <i>Laura Bringmann PhD, University of Groningen</i> <i>Rebecca Kuiper PhD, Utrecht University</i></p>



THURSDAY, JUNE 20 th	
8:00AM - 9:00AM <i>Location: Finger Lakes Foyer</i>	Continental Breakfast
9:00AM - 10:15AM <i>Location: Skaneateles</i>	Keynote Speaker: Ambulatory assessment of psychopathology Timothy Trull PhD <i>University of Missouri</i>
10:15AM - 10:30AM <i>Location: Finger Lakes Foyer</i>	Coffee Break
10:30AM - 12:00PM <i>Location: Otisco</i>	Symposium: From evidence on relationships of diet and physical behavior with mood towards tailored smartphone-interventions in human everyday life Chair: Markus Reichert MSc <i>Mental mHealth Lab, Department of Sports and Sports Science, Karlsruhe Institute of Technology (KIT), Department of Psychiatry and Psychotherapy, Central Institute of Mental Health (CIMH), University of Heidelberg, Medical Faculty Mannheim</i> Discussant: Genevieve F. Dunton PhD, MPH <i>Departments of Preventive Medicine & Psychology, University of Southern California</i> Exploring the association between momentary affective variability and daily activity pattern metrics in children <i>Chih-Hsiang Yang PhD, Department of Preventive Medicine, University of Southern California Eldin Dzibur PhD, Department of Social Work, University of Southern California Jaclyn Maher PhD, Department of Kinesiology, University of North Carolina at Greensboro Britni Belcher PhD, MPH, Department of Preventive Medicine, University of Southern California Donald Hedeker PhD, PHS, Department of Public Health Sciences, University of Chicago Genevieve Fridlund Dunton PhD, MPH, Departments of Preventive Medicine & Psychology, University of Southern California</i> Bi-directional associations of affective states and energy balance behaviors among pregnant women using ecological momentary assessment <i>Tyler B. Mason PhD, Department of Preventive Medicine, University of Southern California Sydney G. O'Connor B.S., Department of Preventive Medicine, University of Southern California Jane Cabison M.S., Department of Preventive Medicine, University of Southern California</i>



	<p>Theresa Bastain PhD, Department of Preventive Medicine, University of Southern California Christine H. Naya M.P.H., Department of Preventive Medicine, University of Southern California Daniel Chu M.P.H., Department of Preventive Medicine, University of Southern California Sandrah P. Eckel PhD, Department of Preventive Medicine, University of Southern California Carrie V. Breton PhD, Department of Preventive Medicine, University of Southern California Genevieve F. Dunton PhD, Department of Preventive Medicine, University of Southern California</p> <p>Sedentary behavior is negatively associated with mood: An ambulatory assessment study among healthy adults</p> <p>Marco Giurgiu M.Sc., Mental mHealth Lab, Department of Sports and Sports Science, Karlsruhe Institute of Technology (KIT) Elena D. Koch M.A., Mental mHealth Lab, Department of Sports and Sports Science, Karlsruhe Institute of Technology (KIT) Jörg Ottenbacher PhD, movisens GmbH, Karlsruhe, Baden-Wuerttemberg, Germany Ronald C. Plotnikoff PhD, Priority Research Centre for Physical Activity and Nutrition, University of Newcastle Markus Reicher M.Sc., Mental mHealth Lab, Department of Sports and Sports Science, Karlsruhe Institute of Technology (KIT); Department of Psychiatry and Psychotherapy, Central Institute of Mental Health (CIMH), University of Heidelberg, Medical Faculty Mannheim</p> <p>Using mobile-health approaches to provide video-based exercise instructions and real-time feedback – an ambulatory assessment intervention</p> <p>Elena D. Koch M.A., Department of Sports and Sports Science, Karlsruhe Institute of Technology (KIT) Francisco B. Ortega PhD, Department of Physical Education and Sports, Faculty of Sport Sciences, University of Granada Adrià Muntaner-Mas PhD, Department of Physical Education, Faculty of Education, University of Balearic Islands Antonio Martinez-Nicolas PhD, Department of Physical Education and Sports, Faculty of Sport Sciences, University of Granada Andreas Reif MD, PhD, Department of Adult Psychiatry, Psychosomatic Medicine and Psychotherapy, University Hospital Frankfurt and German Center of Developmental Psychiatry Christine M. Freitag MD, PhD, Department of Child and Adolescent Psychiatry, Psychosomatic Medicine and Psychotherapy, University Hospital Frankfurt and German Center of Developmental Psychiatry Ulrich W. Ebner-Priemer PhD, Department of Sports and Sports Science, Karlsruhe Institute of Technology (KIT)</p>
<p>10:30AM - 12:00PM Location: Cayuga</p>	<p>Symposium:</p> <p>Methodological issues in ambulatory assessment: Compliance, attrition, delayed responding, recall bias, and changes in response behavior over time</p> <p>Chair: Wolfgang Viechtbauer PhD Center for Contextual Psychiatry, Department of Neuroscience, KU Leuven; Department of Psychiatry and Neuropsychology, School for Mental Health and Neuroscience, Maastricht University</p>



THURSDAY, JUNE 20th	<p>Compliance and retention with the experience sampling method over the continuum of severe mental disorders: A systematic review and meta-analysis</p> <p><i>Hugo Vachon PhD, Center for Contextual psychiatry, Department of Neurosciences, KU Leuven</i> <i>Wolfgang Viechtbauer PhD, Center for Contextual psychiatry, Department of Neurosciences, KU Leuven; Department of Psychiatry and Neuropsychology, School for Mental Health and Neuroscience, Maastricht University</i> <i>Aki Rintala MSc, Center for Contextual psychiatry, Department of Neurosciences, KU Leuven</i> <i>Inez Myin-Germeys PhD, Center for Contextual psychiatry, Department of Neurosciences, KU Leuven</i></p> <p>Predictors of compliance in studies using the experience sampling method (ESM) with high-frequency random sampling</p> <p><i>Aki Rintala MSc, Center for Contextual psychiatry, Department of Neurosciences, KU Leuven</i> <i>Martien Wampers PhD, Center for Contextual psychiatry, Department of Neurosciences, KU Leuven</i> <i>Inez Myin-Germeys PhD, Center for Contextual psychiatry, Department of Neurosciences, KU Leuven</i> <i>Wolfgang Viechtbauer PhD, Center for Contextual psychiatry, Department of Neurosciences, KU Leuven; Department of Psychiatry and Neuropsychology, School for Mental Health and Neuroscience, Maastricht University</i></p> <p>The association between response delay and reported affect in a pooled dataset of experience sampling studies</p> <p><i>Gudrun Vera Eisele MSc, Center for Contextual psychiatry, Department of Neurosciences, KU Leuven</i> <i>Hugo Vachon PhD, Center for Contextual psychiatry, Department of Neurosciences, KU Leuven</i> <i>Inez Myin-Germeys PhD, Center for Contextual psychiatry, Department of Neurosciences, KU Leuven</i> <i>Wolfgang Viechtbauer PhD, Center for Contextual psychiatry, Department of Neurosciences, KU Leuven; Department of Psychiatry and Neuropsychology, School for Mental Health and Neuroscience, Maastricht University</i></p> <p>Recall bias for pain and emotions: Consistency, stability, and predictors</p> <p><i>Marta Walentynowicz PhD, Psychological Sciences Research Institute, Université catholique de Louvain</i> <i>Stefan Schneider PhD, Dornsife Center for Self-Report Science, University of Southern California, Los Angeles</i> <i>Arthur Stone PhD, Dornsife Center for Self-Report Science, University of Southern California, Department of Psychology, University of Southern California</i></p> <p>Changes in response behavior over time in ESM studies: Is there reason for concern?</p> <p><i>Wolfgang Viechtbauer PhD, Center for Contextual psychiatry, Department of Neurosciences, KU Leuven; Department of Psychiatry and Neuropsychology, School for Mental Health and Neuroscience, Maastricht University</i> <i>Hugo Vachon PhD, Center for Contextual psychiatry, Department of Neurosciences, KU Leuven</i></p>
---------------------------------------	--



<p>10:30AM - 12:00PM <i>Location: Hemlock</i></p>	<p>Symposium: Examining robust associations between affect dynamics and psychopathology</p> <p>Chair & Discussant: Marlies Houben PhD <i>KU Leuven</i></p> <p>Can negative affect dynamics predict rate of response to treatment in depression?</p> <p><i>Marieke A. Helmich MSc, University of Groningen</i> <i>Marieke Wichers Prof, University of Groningen</i> <i>F. Peeters Prof, Maastricht University</i> <i>E. Snippe PhD, University of Groningen</i></p> <p>Emotional instability in borderline personality disorder: An examination of the specificity and robustness of this relationship</p> <p><i>Marlies Houben PhD, KU Leuven</i> <i>Egon Dejonckheere MSc, KU Leuven</i> <i>Peter Kuppens Prof, KU Leuven</i></p> <p>Can we beat the mean? Bringing parsimony to the field of emotion dynamics</p> <p><i>Egon Dejonckheere MSc, KU Leuven</i> <i>Merijn Mestdagh PhD, KU Leuven</i> <i>Marlies Houben PhD, KU Leuven</i> <i>Isa Rutten PhD, KU Leuven</i> <i>Laura Sels PhD, KU Leuven</i> <i>Peter Kuppens Prof, KU Leuven</i> <i>Francis Tuerlinckx Prof, KU Leuven</i></p>
<p>10:30AM - 12:00PM <i>Location: Canandaigua</i></p>	<p>Paper Session:</p> <p>1. Measuring daily minority stress among sexual and gender minority adolescents: A mixed methods approach</p> <p><i>Ethan Mereish PhD, American University</i></p> <p>2. Under which circumstances does studying lead to stress? Explaining intraindividual differences by using the cortisol-awakening response as a moderator</p> <p><i>Susanne Koudela-Hamila, Master of Psychology, Department of Applied Psychology, Karlsruhe Institute of Technology</i> <i>Philip Santangelo PhD, Department of Applied Psychology, Karlsruhe Institute of Technology</i> <i>Ulrich Ebner-Priemer PhD, Department of Applied Psychology, Karlsruhe Institute of Technology</i> <i>Wolff Schlotz PhD, Max Planck Institute for Empirical Asthetics</i></p> <p>3. Within-person associations of lagged optimism with subsequent stress occurrence, stress appraisals, and ambulatory blood pressure</p> <p><i>John M. Felt PhD, Methodology Center, The Pennsylvania State University</i></p>



<p>THURSDAY, JUNE 20th</p>	<p><i>Michael A. Russell PhD, Department of Biobehavioral Health, The Pennsylvania State University</i> <i>Jillian A. Johnson PhD, Department of Biobehavioral Health, The Pennsylvania State University</i> <i>John M. Ruiz PhD, Department of Psychology, University of Arizona</i> <i>Bert N. Uchino PhD, Department of Psychology, University of Utah</i> <i>Matthew A. Allison MD, Division of Preventive Medicine, Department of Family and Preventive Medicine, University of California</i> <i>Tim W. Smith PhD, Department of Psychology, University of Utah</i> <i>Daniel J. Taylor PhD, Department of Psychology, University of North Texas</i> <i>Chul Ahn PhD, Department of Clinical Sciences, University of Texas Southwestern Medical Center</i> <i>Joshua M. Smyth PhD, Department of Biobehavioral Health and Department of Medicine, The Pennsylvania State University</i></p> <p>4. The additional heart rate saga: A new beginning</p> <p><i>Martin Gevonden PhD, Vrije Universiteit</i> <i>Eco de Geus PhD, Vrije Universiteit</i></p> <p>5. Non-specific skin conductance responses in a daily life setting</p> <p><i>Eco J.C. de Geus PhD, Vrije Universiteit</i> <i>Denise J. van der Mee MSc, Vrije Universiteit</i> <i>Martin J. Gevonden PhD, Vrije Universiteit</i> <i>Joyce h.d.m. Westerink Prof, Technical University, Eindhoven Netherlands</i></p>
<p>12:00PM-1:45PM</p>	<p>Lunch Break: See SAA 2019 website and program restaurant list for recommendations</p>
<p>1:45PM - 3:15PM <i>Location: Cayuga</i></p>	<p>Symposium: New methods and analytical approaches in ambulatory assessment research</p> <p>Chair: Timothy Trull PhD <i>University of Missouri</i></p> <p>An examination of the effects of cue-elicited respiratory sinus arrhythmia on drinking in daily life</p> <p><i>Taylor Vebares BS, University of Missouri</i> <i>Ashley Helle PhD, University of Missouri</i> <i>Andrea Wycoff MA, University of Missouri</i> <i>Lindsey Freeman BS, University of Missouri</i> <i>Timothy Trull PhD, University of Missouri</i></p> <p>Evaluation of vmPFC-Amygdala Resting State Functional Connectivity as a Transdiagnostic moderator of momentary rumination and sadness</p> <p><i>Megan Fleming BS, University of Missouri</i> <i>John Kerns PhD, University of Missouri</i> <i>Timothy Trull PhD, University of Missouri</i></p>



	<p>Bi-directional associations between momentary impulsivity and alcohol consumption</p> <p><i>Lindsey Freeman BS, University of Missouri</i> <i>Sarah Griffin PhD, University of Missouri</i> <i>Andrea Wycoff MA, University of Missouri</i> <i>Timothy Trull PhD, University of Missouri</i></p> <p>Facets of impulsivity and drinking in daily life: Methodological and statistical considerations</p> <p><i>Sarah Griffin PhD, University of Missouri</i> <i>Lindsey Freeman BS, University of Missouri</i> <i>Timothy Trull PhD, University of Missouri</i></p>
<p>1:45PM - 3:15PM <i>Location: Canandaigua</i></p>	<p>Symposium:</p> <p>Momentary negative affect in psychopathology samples: The context of distress, romantic relationships, drinking, and self-harm</p> <p>Chair: Johanna Hepp MSc <i>Central Institute of Mental Health Mannheim (Heidelberg University)</i></p> <p>Specific emotions in the daily life of patients with BPD, PTSD, bulimia nervosa, and healthy controls: Frequency, intensity, and associated distress</p> <p><i>Tobias D. Kockler Dipl.-Psych., Karlsruhe Institute of Technology</i> <i>Philip S. Santangelo PhD, Karlsruhe Institute of Technology</i> <i>Ulrich W. Ebner-Priemer PhD, Karlsruhe Institute of Technology</i></p> <p>Everyday interactions between individuals with personality disorders and their romantic partners: Negative reactions to positive and negative events</p> <p><i>Sean P. Lane PhD, Purdue University</i> <i>Timothy J. Trull PhD, University of Missouri</i> <i>Stephanie D. Stepp PhD, University of Pittsburgh</i></p> <p>Affect during drinking episodes as a function of momentary alcohol use motives</p> <p><i>Andrea M. Wycoff MA, University of Missouri</i> <i>Johanna Hepp MSc, Central Institute of Mental Health</i> <i>Ryan W. Carpenter PhD, Brown University</i> <i>Timothy J. Trull PhD, University of Missouri</i></p> <p>The effects of non-suicidal self-injury on negative affect and beta-endorphin levels in daily life</p> <p><i>Johanna Hepp MSc, Central Institute of Mental Health, Mannheim, Germany</i> <i>Lisa M. Störkel MSc, Central Institute of Mental Health, Mannheim, Germany</i> <i>Christian Schmahl Prof., MD, Central Institute of Mental Health, Mannheim, Germany</i> <i>Inga Niedtfeld Dr. habil, Central Institute of Mental Health Mannheim, Germany</i></p>



<p>THURSDAY, JUNE 20th 1:45PM - 3:15PM <i>Location: Otisco</i></p>	<p>Symposium: From mobile health (mHealth) to mental health: ESIs and EMIs as promising tools to improve psychological treatment</p> <p>Chair & Discussant: Jojanneke Bastiaansen PhD <i>Department of Psychiatry, Interdisciplinary Center Psychopathology and Emotion Regulation, University of Groningen, University Medical Center Groningen; Department of Education and Research, Friesland Mental Health Care Services</i></p> <p>Comparison of the effect of two experience sampling intervention modules for depression on momentary positive and negative affect</p> <p><i>Daan A. Ornée MSc, University of Groningen, University Medical Center Groningen, Department of Psychiatry, Interdisciplinary Center Psychopathology and Emotion Regulation, Groningen; Friesland Mental Health Care Services, Department of Education and Research</i> <i>Prof. Albertine J. Oldehinkel PhD, University of Groningen, University Medical Center Groningen, Department of Psychiatry, Interdisciplinary Center Psychopathology and Emotion Regulation, Groningen</i> <i>Evelien Snippe PhD, University of Groningen, University Medical Center Groningen, Department of Psychiatry, Interdisciplinary Center Psychopathology and Emotion Regulation, Groningen</i> <i>Jojanneke A. Bastiaansen PhD, University of Groningen, University Medical Center Groningen, Department of Psychiatry, Interdisciplinary Center Psychopathology and Emotion Regulation, Groningen; Friesland Mental Health Care Services, Department of Education and Research</i></p> <p>Ecological Momentary Interventions (EMIs) and an introduction to a novel self-esteem EMI in traumatized youth: The SELFIE-study</p> <p><i>Maud Daemen MSc, Department of Psychiatry and Neuropsychology, School for Mental Health and Neuroscience, Maastricht University</i> <i>Mary Rose Postma MSc, Department of Psychiatry and Neuropsychology, School for Mental Health and Neuroscience, Maastricht University; Mondriaan Mental Health, Heerlen/Maastricht, The Netherlands</i> <i>Marlies van Nieuwkoop MSc, Department of Psychiatry and Neuropsychology, School for Mental Health and Neuroscience, Maastricht University</i> <i>Frankie Joosten MSc, Department of Psychiatry and Neuropsychology, School for Mental Health and Neuroscience, Maastricht University; Mondriaan Mental Health, Heerlen/Maastricht; Lionarons GGZ Mental Health Service, Heerlen, The Netherlands</i> <i>Iris Hoes - van der Meulen MSc, Department of Psychiatry and Neuropsychology, School for Mental Health and Neuroscience, Maastricht University; Prodeba Mental Health Care, Leiden, The Netherlands</i> <i>Prof. Koen Schruers PhD, Department of Psychiatry and Neuropsychology, School for Mental Health and Neuroscience, Maastricht University; Department of Health Psychology, Faculty of Psychology, University of Leuven</i> <i>Prof. Mark van der Gaag PhD, Department of Clinical Psychology, VU University, Amsterdam</i> <i>Dorien Nieman PhD, Department of Psychiatry, Amsterdam University Medical Centers,</i> <i>Prof. Ramon Lindauer MA, MD, PhD, De Bascule Academic Center Child and Adolescent Psychiatry, Amsterdam; Department of Child and Adolescent Psychiatry, Amsterdam UMC</i> <i>Ulrich Reininghaus PhD, Department of Psychiatry and Neuropsychology, School for Mental</i></p>
---	--



Health and Neuroscience, Maastricht University; Department of Public Mental Health, Central Institute of Mental Health, University of Heidelberg; Centre for Epidemiology and Public Health, Health Service and Population Research Department, Institute of Psychiatry, Psychology & Neuroscience, King's College London

ACT in daily-life: an RCT examining an ecological momentary intervention to reduce sub-threshold symptoms of psychopathology in emerging adults.

Evelyne van Aubel MSc, Department of Neurosciences, Center for Contextual Psychiatry, University of Leuven

Jindra Myrthe Bakker PhD, Department of Psychiatry and Psychology, School for Mental Health and Neuroscience, EURON, Maastricht University Medical Center

Stijn Michielse PhD, Department of Psychiatry and Psychology, School for Mental Health and Neuroscience, EURON, Maastricht University Medical Center

Tim Batink PhD, Department of Psychiatry and Psychology, School for Mental Health and Neuroscience, EURON, Maastricht University Medical Center, Maastricht, The Netherlands 2 U-Center

Iris Lange PhD, Department of Psychiatry and Psychology, School for Mental Health and Neuroscience, EURON, Maastricht University Medical Center

Prof. Koen Schruers MD, PhD, Department of Psychiatry and Psychology, School for Mental Health and Neuroscience, EURON, Maastricht University Medical Center; Department of Health Psychology, Faculty of Psychology, University of Leuven

Machteld Marcelis MD, PhD, Department of Psychiatry and Psychology, School for Mental Health and Neuroscience, EURON, Maastricht University Medical Center; Institute for Mental Health Care Eindhoven (GGzE)

Prof. Thérèse van Amelsvoort MD, PhD, Department of Psychiatry and Psychology, School for Mental Health and Neuroscience, EURON, Maastricht University Medical Center

Prof. Ulrich Reininghaus PhD, Department of Public Mental health, Central Institute of Mental Health, University of Heidelberg; Department of Psychiatry and Psychology, School for Mental Health and Neuroscience, EURON, Maastricht University Medical Center; Center for Epidemiology and Public Health, Health Service and Population Research Department, Institute of Psychiatry, Psychology & Neuroscience, King's College London

Prof. Inez Myin-Germeys PhD, Department of Neurosciences, Center for Contextual Psychiatry, University of Leuven

Efficacy of a novel, accessible, transdiagnostic, compassion-focused ecological momentary intervention for enhancing resilience in help-seeking youth

Ulrich Reininghaus PhD, Department of Public Mental health, Central Institute of Mental Health, University of Heidelberg; Department of Psychiatry and Psychology, School for Mental Health and Neuroscience, EURON, Maastricht University Medical Center; Center for Epidemiology and Public Health, Health Service and Population Research Department, Institute of Psychiatry, Psychology & Neuroscience, King's College London



<p>THURSDAY, JUNE 20th 1:45PM - 3:15PM <i>Location: Hemlock</i></p>	<p>Paper Session:</p> <p>1. A comparison of smartphone-based and accelerometer-based physical activity measures in bipolar disorder</p> <p><i>Holger Hill PhD, Karlsruhe Institute of Technology</i> <i>Esther Mühlbauer MSc, University of Dresden</i> <i>Emanuel Severus MD, University of Dresden</i> <i>Michael Bauer PhD, University of Dresden</i> <i>Ulrich W. Ebner-Priemer PhD, Karlsruhe Institute of Technology</i></p> <p>2. Actigraphy-based sleep, circadian rhythm and physical activity patterns in depressive and anxiety disorders: results from the NESDA study</p> <p><i>Sonia DiFrancesco MSc, Amsterdam UMC</i> <i>*Femke Lamers MSc, Amsterdam UMC</i> <i>Harriëtte Riese PhD, University Medical Center Groningen</i> <i>Kathleen R. Merikangas PhD, National Institute of Mental Health</i> <i>Vadim Zipunnikov PhD, Johns Hopkins University</i> <i>Aartjan T.F. Beekman PhD, MD, Amsterdam UMC</i> <i>Niki Antypa PhD, Leiden University Medical Center</i> <i>Albert A. M. van Hemert PhD, MD, Leiden University Medical Center</i> <i>Robert A. Schoevers PhD, MD, University Medical Center Groningen</i> <i>Brenda W.J.H. Penninx PhD, Amsterdam UMC</i></p> <p>3. Momentary assessment of minority older adults' physical activity and sedentary behavior: Feasibility and validity</p> <p><i>Jaclyn Maher PhD, University of North Carolina Greensboro</i> <i>* Derek J Hevel MS, University of North Carolina Greensboro</i> <i>Kourtney Sappenfield, University of North Carolina Greensboro</i> <i>Heidi Scheer, University of North Carolina Greensboro</i> <i>Christine Zecca, University of North Carolina Greensboro</i> <i>Laurie Kennedy-Malone Ph.D., GNP-BC, University of North Carolina Greensboro</i></p> <p>4. The association of type and level of exercise on quality of life in breast cancer survivors participating in a smartphone based exercise intervention</p> <p><i>Gwendolyn A. Thomas PhD, Syracuse University</i> <i>Margaret F. Bedillion MS, Syracuse University</i> <i>Emily B Ansell PhD, Syracuse University</i></p>
<p>3:15PM - 3:30PM <i>Location: Finger Lakes Foyer</i></p>	<p>Coffee Break</p>



<p>3:30PM - 5:00PM <i>Location: Otisco</i></p>	<p>Symposium: Innovative statistical approaches for empirical researchers working with intensive longitudinal data</p> <p>Chair: Andreas Neubauer PhD <i>DIPF Leibniz Institute for Research and Information in Education</i></p> <p>The changes they are a-changin': Assessing within-person fluctuations in within-person change using multilevel latent change score models</p> <p><i>Andreas B. Neubauer PhD, DIPF Leibniz Institute for Research and Information in Education</i> <i>Andrea Schmidt MSc, DIPF Leibniz Institute for Research and Information in Education</i> <i>Judith Dirk PhD, DIPF Leibniz Institute for Research and Information in Education</i> <i>Florian Schmiedek PhD, DIPF Leibniz Institute for Research and Information in Education</i></p> <p>Multilevel dynamic twin modeling</p> <p><i>Noémi Schuurman PhD, Tilburg University</i> <i>Yao Zheng PhD, University of Alberta</i> <i>Marieke Wichers PhD, University of Groningen</i> <i>Conor Dolan PhD, University of Amsterdam</i></p> <p>Experiments in the wild: The within-person encouragement design</p> <p><i>Florian Schmiedek PhD, DIPF Leibniz Institute for Research and Information in Education</i> <i>Andreas B. Neubauer PhD, DIPF Leibniz Institute for Research and Information in Education</i> <i>Jasmin Breitwieser MSc, DIPF Leibniz Institute for Research and Information in Education</i> <i>Garvin Brod PhD, DIPF Leibniz Institute for Research and Information in Education</i></p> <p>Causal heterogeneity in experimental and intensive longitudinal data</p> <p><i>Niall Bolger PhD, Columbia University</i> <i>Katherine S. Zee M.Phil, Columbia University</i> <i>Maya Rossignac-Milon M.Phil, Columbia University</i> <i>Megan Goldring BA, Columbia University</i> <i>Ran R. Hassin PhD, Hebrew University</i></p>
<p>3:30PM - 5:00PM <i>Location: Cayuga</i></p>	<p>Symposium: The potential and challenges of person-specific models in psychiatry</p> <p>Chair: Harriette Riese PhD <i>Interdisciplinary Center Psychopathology and Emotion regulation, University Medical Center Groningen, University of Groningen</i></p> <p>Comorbidity between anxiety and depression: The role of bridge mental states in the dynamic network structure</p> <p><i>Robin N. Groen MSc, Interdisciplinary Center Psychopathology and Emotion regulation (ICPE), Department of Psychiatry, University Medical Center Groningen, University of Groningen</i></p>



THURSDAY, JUNE 20th

Catharina A. Hartman PhD, Interdisciplinary Center Psychopathology and Emotion regulation (ICPE), Department of Psychiatry, University Medical Center Groningen, University of Groningen
Harriëtte Riese PhD, Interdisciplinary Center Psychopathology and Emotion regulation (ICPE), Department of Psychiatry, University Medical Center Groningen, University of Groningen
Brenda W. Penninx PhD, Department of Psychiatry, VU University Medical Center
Erik J. Giltay MD PhD, Department of Psychiatry, Leiden University Medical Center
Johanna T.W. Wigman PhD, Interdisciplinary Center Psychopathology and Emotion regulation (ICPE), Department of Psychiatry, University Medical Center Groningen, University of Groningen
Marieke Wichers PhD, Interdisciplinary Center Psychopathology and Emotion regulation (ICPE), Department of Psychiatry, University Medical Center Groningen, University of Groningen

Integration of nomothetic and idiographic approaches to modeling psychopathological processes

William C. Woods MA, University of Pittsburgh
Kathleen M. Gates PhD, University of North Carolina
Stephanie D. Stepp PhD, University of Pittsburgh School of Medicine
Paul A. Pilkonis PhD, University of Pittsburgh School of Medicine
Aidan G. C. Wright PhD, University of Pittsburgh

Can individualized reward system networks predict depressive symptomatology in adolescents?

Alberto Jover Martinez B.Sc, Maastricht University
Johanna T.W. Wigman PhD, Interdisciplinary Center Psychopathology and Emotion regulation (ICPE), Department of Psychiatry, University Medical Center Groningen, University of Groningen
Anna Kuranova MSc, Interdisciplinary Center Psychopathology and Emotion regulation (ICPE), Department of Psychiatry, University Medical Center Groningen, University of Groningen
Sanne Booij PhD, Interdisciplinary Center Psychopathology and Emotion regulation (ICPE), Department of Psychiatry, University Medical Center Groningen, University of Groningen
Marieke Wichers PhD, Interdisciplinary Center Psychopathology and Emotion regulation (ICPE), Department of Psychiatry, University Medical Center Groningen, University of Groningen

Using individual networks in clinical practice: A collaborative approach

Lino von Klipstein MSc, Interdisciplinary Center Psychopathology and Emotion regulation (ICPE), Department of Psychiatry, University Medical Center Groningen, University of Groningen
Michelle Servaas PhD, Interdisciplinary Center Psychopathology and Emotion regulation (ICPE), Department of Psychiatry, University Medical Center Groningen, University of Groningen
Date van der Veen MSc, Interdisciplinary Center Psychopathology and Emotion regulation (ICPE), Department of Psychiatry, University Medical Center Groningen, University of Groningen
Robert Schoevers PhD, Interdisciplinary Center Psychopathology and Emotion regulation (ICPE), Department of Psychiatry, University Medical Center Groningen, University of Groningen
Harriëtte Riese PhD, Interdisciplinary Center Psychopathology and Emotion regulation (ICPE), Department of Psychiatry, University Medical Center Groningen, University of Groningen



<p>3:30PM - 5:00PM <i>Location: Canandaigua</i></p>	<p>Symposium: Making the black box transparent: Open science practices in ESM research</p> <p>Co-Chair: Ginette Lafit PhD <i>KU Leuven</i></p> <p>Co-Chair: Olivia J. Kirtley PhD <i>KU Leuven</i></p> <p>Discussant: Evan Kleiman PhD <i>Rutgers University</i></p> <p>Best practices to stimulate open science in ambulatory assessment studies</p> <p><i>Eeske van Roekel PhD, Tilburg University, Department of Developmental Psychology</i> <i>Loes Keijsers PhD, Tilburg University, Department of Developmental Psychology</i> <i>Joanne Chung PhD, Tilburg University, Department of Developmental Psychology</i></p> <p>Challenges in conducting power analysis in experience sampling studies</p> <p><i>Ginette Lafit PhD, Center for Contextual Psychiatry, KU Leuven</i> <i>Janne Adolf PhD, Research Group on Quantitative Psychology and Individual Differences, KU Leuven</i> <i>Wolfgang Viechtbauer PhD, Psychiatry & Neuropsychology, School for Mental Health and Neuroscience, Fac. Health, Medicine and Life Sciences, Maastricht University</i> <i>Inez Myin-Germeys PhD, Center for Contextual Psychiatry, KU Leuven</i> <i>Eva Ceulemans PhD, Research Group on Quantitative Psychology and Individual Differences, KU Leuven</i></p> <p>Open science in practice: The dynamical signature of anhedonia in major depressive disorder (MDD)</p> <p><i>Vera E. Heininga PhD, Research Group on Quantitative Psychology and Individual Differences, KU Leuven</i> <i>Egon Dejonckheere MSc, Research Group on Quantitative Psychology and Individual Differences, KU Leuven</i> <i>Marlies Houben PhD, Research Group on Quantitative Psychology and Individual Differences, KU Leuven</i> <i>Jasmien Obbels MSc, KU Leuven, University Psychiatric Center KU Leuven, Academic Center for ECT and Neuromodulation</i> <i>Pascal Sienaert MD PhD, KU Leuven, University Psychiatric Center KU Leuven, Academic Center for ECT and Neuromodulation</i> <i>Bart Leroy MD PhD, KU Leuven, University Psychiatric Center KU Leuven, Academic Center for ECT and Neuromodulation</i> <i>Joris van Roy MD, Psychiatric Hospital Alexianen</i> <i>Peter Kuppens PhD, Research Group on Quantitative Psychology and Individual Differences, KU Leuven</i></p>
--	--



	<p>The experience sampling item repository: Open materials for more open ESM research</p> <p><i>Olivia J. Kirtley PhD, Center for Contextual Psychiatry, KU Leuven</i> <i>Anu P. Hiekkaranta MSc, Center for Contextual Psychiatry, KU Leuven</i> <i>Yoram K. Kunkels MSc, Universitair Medisch Centrum Groningen, Rijksuniversiteit Groningen</i> <i>Silke Apers MSc, Center for Contextual Psychiatry, KU Leuven</i> <i>Davinia Verhoeven MSc, Center for Contextual Psychiatry, KU Leuven</i> <i>Martine Van Nierop PhD, Center for Contextual Psychiatry, KU Leuven</i></p>
<p>5:00PM – 7:00PM <i>Location: Persian Terrace</i></p>	<p>Poster session and Conference Reception Cash bar and hors d'oeuvres will be served *Please see poster appendix for poster titles and numbers</p>
<p>FRIDAY, JUNE 21st</p>	
<p>8:00AM – 9:00AM <i>Location: Finger Lakes Foyer</i></p>	<p>Continental breakfast</p>
<p>9:00AM - 10:15AM <i>Location: Skaneateles</i></p>	<p>Young Investigator Keynote Speaker: Network models in psychology – More than a pretty picture?</p> <p>Laura Bringmann PhD <i>University of Groningen, Psychometrics Statistics Department</i></p>
<p>10:15AM -10:30AM <i>Location: Finger Lakes Foyer</i></p>	<p>Coffee Break</p>
<p>10:30AM – 12:00PM <i>Location: Otisco</i></p>	<p>Symposium: Changes in ESM data: Innovations in detecting change over time</p> <p>Chair: Evelien Snippe PhD <i>University of Groningen, University Medical Center Groningen</i></p> <p>Real-time detection of prodromes using ESM data and statistical process control <i>Arnout C. Smit, MSc, University of Groningen, University Medical Center Groningen, Department of Psychiatry</i></p> <p>The timing of sleep disturbances and mood shifts in the transition to a mood episode in bipolar disorder <i>Evelien Snippe PhD, University of Groningen, University Medical Center Groningen</i></p>



	<p>An exploration of changes in network dynamics after personalized lifestyle advice in anhedonic young adults</p> <p><i>Eeske van Roekel PhD, Tilburg University, Department of Developmental Psychology</i></p> <p>Detecting gradual and abrupt changes in dynamic processes</p> <p><i>Laura Bringmann PhD, University of Groningen, Psychometrics and Statistics department</i></p>
<p>10:30AM -12:00PM <i>Location: Cayuga</i></p>	<p>Symposium: Understanding health behavior and well-being in everyday life: Intensive longitudinal studies in dyads and individuals</p> <p>Chair: Janina Lüscher PhD <i>University of Zurich</i></p> <p>Discussant: Patrick E. Shrout PhD <i>New York University</i></p> <p>How does children's daily media consumption in the evening affect their sleep and alertness?</p> <p><i>Janina Lüscher PhD, University of Zurich</i> <i>Theda Radkte PhD, University of Zurich</i> <i>Urte Scholz PhD, University of Zurich</i></p> <p>The interplay between intra- and interpersonal emotion regulation in couples' in daily life: Results from dyadic ambulatory assessment</p> <p><i>Andrea B. Horn PhD, University of Zurich</i> <i>Vanessa Rosenberger PhD, University of Zurich</i> <i>Sarah Holzgang PhD, University of Zurich</i></p> <p>Companionship is associated with better affect and relationship satisfaction, but links with health behavior depend on partner behavior in couples</p> <p><i>Gertraud Stadler PhD, University of Aberdeen</i> <i>Janina Lüscher PhD, University of Zurich</i> <i>Urte Scholz PhD, University of Zurich</i></p> <p>Within-person effects of goal setting: A micro-randomized trial to reduce sugar-sweetened beverage intake</p> <p><i>Jennifer Inauen PhD, University of Bern</i> <i>Urte Scholz PhD, University of Zurich</i> <i>Niall Bolger PhD, Columbia University</i></p>



<p>FRIDAY, JUNE 21st 10:30AM - 12:00PM <i>Location: Canandaigua</i></p>	<p>Symposium: Experience sampling studies of psychopathology across the schizophrenia spectrum</p> <p>Chair: Inez Myin-Germeys PhD <i>Center for Contextual psychiatry, Department of Neurosciences, KU Leuven</i></p> <p>Putative psychological mechanisms in early psychosis <i>Ulrich Reininghaus PhD, Central Institute of Mental Health, Medical Faculty Mannheim, University of Heidelberg</i></p> <p>Recovery from daily-life stressors in early and chronic psychosis <i>Thomas Vaessen PhD, Center for Contextual psychiatry, Department of Neurosciences, KU Leuven,</i> <i>Wolfgang Viechtbauer PhD, Department of Psychiatry and Neuropsychology, School for Mental Health and Neuroscience, Maastricht University</i> <i>Yori Van Der Steen PhD, Department of Psychiatry and Neuropsychology, School for Mental Health and Neuroscience, Maastricht University</i> <i>Craig Morgan PhD, National Institute for Health Research (NIHR) Mental Health Biomedical Research Centre (BRC) at South London and Maudsley NHS Foundation Trust and King's College, London</i> <i>Til Wykes PhD, National Institute for Health Research (NIHR) Mental Health Biomedical Research Centre (BRC) at South London and Maudsley NHS Foundation Trust and King's College, London</i> <i>Lucia Valmaggia PhD, National Institute for Health Research (NIHR) Mental Health Biomedical Research Centre (BRC) at South London and Maudsley NHS Foundation Trust and King's College, London</i> <i>Zuzana Kasanova PhD, Center for Contextual psychiatry, Department of Neurosciences, KU Leuven</i> <i>Stephan Claes PhD, Mind-Body Research group, Department of Neurosciences, KU Leuven</i> <i>Ulrich Reininghaus PhD, Central Institute of Mental Health, Medical Faculty Mannheim, University of Heidelberg</i> <i>Inez Myin-Germeys PhD, Center for Contextual psychiatry, Department of Neurosciences, KU Leuven</i></p> <p>Reinforcement-learning-related neural signals predict reward-oriented behavior in the daily lives of individuals at early stages of psychosis <i>James Waltz PhD, Maryland Psychiatric Research Center, Maryland University School of Medicine</i> <i>Zuzana Kasanova PhD, Center for Contextual psychiatry, Department of Neurosciences, KU Leuven</i> <i>Thomas Vaessen PhD, Center for Contextual psychiatry, Department of Neurosciences, KU Leuven</i> <i>Inez Myin-Germeys PhD, Center for Contextual psychiatry, Department of Neurosciences, KU Leuven</i></p> <p>Social reward-oriented behavior in psychosis. An experience sampling study <i>Zuzana Kasanova PhD, Center for Contextual psychiatry, Department of Neurosciences, KU Leuven</i></p>
--	---



	<p>Leuven Inez Myin-Germeys PhD, Center for Contextual psychiatry, Department of Neurosciences, KU Leuven</p>
<p>10:30AM – 12:00PM Location: Hemlock</p>	<p>Paper Session:</p> <p>1. Ambulatory assessment in psychopathology research: A review of current practices and recommended guidelines</p> <p>Timothy Trull PhD, University of Missouri Ulrich Ebner-Priemer PhD, KIT - Karlsruhe Institute of Technology</p> <p>2. I can't stop ruminating. The role of inhibition in daily repetitive negative thinking</p> <p>Monika Kornacka PhD, SWPS University of Social Sciences and Humanities Celine Douilliez Prof., Psychological Sciences Research Institute, Catholic University of Louvain Piotr Napieralski Ph.D. (habilitation), Lodz Technical University Izabela Krejtz Prof., SWPS University of Social Sciences and Humanities</p> <p>3. Investigating race differences in body dissatisfaction and overeating: An ecological momentary assessment study</p> <p>Lindsay Howard MS, Virginia Consortium Program in Clinical Psychology Rachel I MacIntyre MS, Virginia Consortium Program in Clinical Psychology Kristin E Heron PhD, Old Dominion University</p> <p>4. Trapped in stress - The impacts of loneliness on emotional responses to everyday stressors</p> <p>Jee Eun Kang MA, Department of Human Development and Family Studies, Pennsylvania State University Martin John Sliwinski PhD, Department of Human Development and Family Studies, Pennsylvania State University Jinshil Hyun PhD, Department of Neurology, Albert Einstein College of Medicine</p> <p>5. Exploring experiential avoidance using an EMA paradigm</p> <p>Susan J Wenze PhD, Lafayette College Trent L Gaugler PhD, Lafayette College Erin S Sheets PhD, Colby College Jennifer M DeCicco PhD, Holy Family University</p>
<p>12:00PM - 1:45PM</p>	<p>Lunch Break: See SAA website for local restaurant recommendations</p>



<p>FRIDAY, JUNE 21st 1:45PM - 3:15PM <i>Location: Hemlock</i></p>	<p>Symposium: The daily effect of social interactions on well-being across contexts: Findings from childhood to college age</p> <p>Chair: Andrea Schmidt MSc <i>DIPF Leibniz Institute for Research and Information in Education</i></p> <p>Exploring the need for relatedness in children: Differential effects of relatedness satisfaction and frustration on affective well-being</p> <p><i>Andrea Schmidt, MSc, DIPF Leibniz Institute for Research and Information in Education</i> <i>Andreas B. Neubauer PhD, DIPF Leibniz Institute for Research and Information in Education</i> <i>Judith Dirk PhD, DIPF Leibniz Institute for Research and Information in Education</i> <i>Florian Schmiedek PhD, DIPF Leibniz Institute for Research and Information in Education</i></p> <p>Peer interactions in everyday school life versus leisure time of adolescents and their emotional experience</p> <p><i>Margarita Knickenberg PhD, University of Bielefeld</i> <i>Carmen L. A. Zurbriggen PhD, University of Bielefeld</i> <i>Chantal Hinni, MA, University of Fribourg</i> <i>Martin Venetz PhD, University of Applied Sciences of Special Needs Education Zurich</i></p> <p>The fundamental, every-day nature of the experience of exclusion: Using ecological momentary assessment to understand social ostracism</p> <p><i>Michael J. Bernstein PhD, Penn State University Abington College</i> <i>Andreas B. Neubauer PhD, DIPF Leibniz Institute for Research and Information in Education</i> <i>Jacob A. Benfield PhD, Penn State University Abington College</i> <i>Joshua M. Smyth PhD, Penn State University</i></p> <p>Daily family and peer conflict in first-year college students: Results from a randomized mindfulness intervention</p> <p><i>Sunhye Bai PhD, Human Development and Family Studies, The Pennsylvania State University</i> <i>Steriani Elavsky PhD, Institute for Research on Children, Youth and Family, Masaryk University</i> <i>Moé Kishida PhD, College of Health Solutions, Arizona State University</i> <i>Kamila Dvořáková PhD, The National Institute for Mental Health</i></p>
<p>1:45PM - 3:15PM <i>Location: Cayuga</i></p>	<p>Symposium: It's all about time. A dynamic systems perspective on human change processes</p> <p>Chair: Anna Lichtwarck-Aschoff <i>Radboud University, Behavioral Science Institute</i></p> <p>Discussant: Niall Bolger PhD <i>Columbia University, Department of Psychology</i></p>



	<p>Micro-transactive effects in depressed mother-infant interactions: When you soothe, I soothe</p> <p><i>Kaya de Barbaro PhD, The University of Texas at Austin, Department of Psychology</i> <i>Priyanka Khante, MSc, The University of Texas at Austin, Electrical and Computer Engineering</i> <i>Meeka Halperin, MSc, Emory University, Department of Psychology</i> <i>Mckensy Johnson, MSc, The University of Texas at Austin, Department of Psychology</i> <i>Sherryl Goodman PhD, Emory University, Department of Psychology</i></p> <p>Destabilization within treatment processes – a window on personalized care</p> <p><i>Anna Lichtwarck-Aschoff PhD, University of Nijmegen, Behavioral Science Institute</i></p> <p>Bridging the gap: Concept and results of idiographic system modelling</p> <p><i>Benjamin Aas, MSc, LMU Munich, Department of Child and Adolescent Psychiatry</i> <i>Guenter Schiepek PhD, Institute for Synergetics and Psychotherapy Research, Paracelsus Medical University Salzburg</i> <i>SysTelios Think-Tank, research consortium of the sysTelios Gesundheitszentrum Siedelsbrunn GmbH & Co. KG</i></p> <p>Are psychotherapies moving on standard tracks? A data-based discussion and a window to artificial intelligence in psychotherapy</p> <p><i>Guenter Schiepek PhD, Institute for Synergetics and Psychotherapy Research, Paracelsus Medical University Salzburg</i> <i>Helmut Schoeller PhD, Institute for Synergetics and Psychotherapy Research, Paracelsus Medical University Salzburg</i> <i>Kathrin Viol PhD, Institute for Synergetics and Psychotherapy Research, Paracelsus Medical University Salzburg</i> <i>Benjamin Aas, MSc, LMU Munich, University Hospital of Psychiatry, Psychotherapy, and Psychosomatics, Christian Doppler Medical Center, Paracelsus Medical University</i></p>
<p>1:45PM - 3:15PM <i>Location: Otisco</i></p>	<p>Symposium: Timely challenges in innovative experience sampling (ESM) research to solve psychopathology problems</p> <p>Chair: Marieke Wichers PhD <i>University Medical Center Groningen</i></p> <p>Discussant: Laura F. Bringmann PhD <i>University of Groningen</i></p> <p>Capturing periods of important symptom transitions: novel opportunities and challenges that come with long-term intensive daily life monitoring</p> <p><i>Marieke Wichers PhD, University Medical Center Groningen</i> <i>Evelien Snippe PhD, University Medical Center Groningen</i> <i>*Arnout C. Smit MSc, University Medical Center Groningen</i> <i>*Marieke A. Helmich MSc, University Medical Center Groningen</i></p>



<p>FRIDAY, JUNE 21st</p>	<p><i>Yoram K. Kunkels MSc, University Medical Center Groningen</i> <i>Marieke J. Schreuder MSc, University Medical Center Groningen</i> <i>Robin N. Groen MSc, University Medical Center Groningen</i> <i>Harriette Riese PhD, University Medical Center Groningen</i> <i>Johanna T.W. Wigman PhD, University Medical Center Groningen</i> <i>Catharina A. Hartman PhD, University Medical Center Groningen</i></p> <p>Combining active and passive monitoring techniques in mental health research: opportunities and challenges</p> <p><i>Thomas Vaessen PhD, Catholic University of Leuven</i> <i>Joana Velozo MSc, Catholic University of Leuven</i> <i>Stephan Claes PhD, Catholic University of Leuven</i> <i>Inez Myin-Germeys PhD, Catholic University of Leuven</i></p> <p>The impact of researchers' choices on the selection of treatment targets using experience sampling methodology: Challenges for clinical implementation</p> <p><i>Jojanneke A. Bastiaansen PhD, University Medical Center Groningen</i> <i>Yoram K. Kunkels MSc, University Medical Center Groningen</i> <i>Casper J. Albers PhD, University of Groningen</i> <i>Laura F. Bringmann PhD, University of Groningen</i></p>
<p>1:45PM - 3:15PM <i>Location: Canandaigua</i></p>	<p>Paper Session:</p> <p>1. The associations of job resources and challenge and hindrance demands with dedication in geriatric care: The mediating role of meaning and vigor</p> <p><i>Joachim Thomas PhD, Catholic University of Eichstaett-Ingolstadt</i> <i>Elisabeth Riedl MSc, Catholic University of Eichstaett-Ingolstadt</i></p> <p>2. A multi-informant experience sampling approach to the effects of vitality and sleep on teachers' dynamic job performance</p> <p><i>Loes Abrahams MSc, Ghent University</i> <i>Filip De Fruyt Prof., Ghent University</i></p> <p>3. Understanding how mechanisms of motivational change contribute to the manifestation of dilatory behavior in students' daily lives</p> <p><i>Lena Wieland MSc, Karlsruhe Institute of Technology (KIT)</i> <i>Ulrike E. Nett Jun.-Prof., Augsburg University</i> <i>Ulrich W. Ebner-Priemer Prof., Karlsruhe Institute of Technology (KIT)</i></p> <p>4. The role of heart rate variability in the job demands-resources model: An ambulatory assessment study on psychophysiological stress reactions</p> <p><i>Regina Franziska Riepl MSc, Catholic University of Eichstaett-Ingolstadt</i> <i>Joachim Thomas PhD, Catholic University of Eichstaett-Ingolstadt</i></p>



	<p>5. Blood pressure responses to stress in everyday life: Exploring time-lagged associations and the role of perseverative cognition</p> <p><i>Jillian A. Johnson PhD, Department of Biobehavioral Health, The Pennsylvania State University</i> <i>Michael A. Russell PhD, Department of Biobehavioral Health, The Pennsylvania State University</i> <i>John M. Felt PhD, Department of Biobehavioral Health, The Pennsylvania State University</i> <i>John M. Ruiz PhD, Department of Psychology, University of Arizona</i> <i>Matthew A. Allison MD, MPH, Division of Preventive Medicine, Department of Family and Preventive Medicine, University of California, San Diego</i> <i>Bert N. Uchino PhD, Department of Psychology, University of Utah</i> <i>Timothy W. Smith PhD, Department of Psychology, University of Utah</i> <i>Daniel J. Taylor PhD, Department of Psychology, University of North Texas</i> <i>Chul Ahn PhD, Department of Clinical Sciences, University of Texas Southwestern Medical Center</i> <i>Joshua M. Smyth PhD, Departments of Biobehavioral Health and Medicine, The Pennsylvania State University</i></p>
<p>3:15PM - 3:30PM <i>Location: Finger lakes Foyer</i></p>	<p>Coffee Break</p>
<p>3:30PM – 5:00PM <i>Location: Cayuga</i></p>	<p>Symposium:</p> <p>Keeping pace with actigraphy research: Recent innovations in actigraphy based time-series of depressed, bipolar, or schizophrenic patients</p> <p>Chair: Harriëtte Riese PhD <i>Interdisciplinary Center Psychopathology and Emotion regulation (ICPE), Department of Psychiatry, University of Groningen, University Medical Center Groningen</i></p> <p>Automated management and analysis of physical activity data: Facilitating convenient sleep and circadian rhythm preprocessing and analysis</p> <p><i>Yoram K. Kunkels MSc, Interdisciplinary Center Psychopathology and Emotion regulation (ICPE), Department of Psychiatry, University of Groningen, University Medical Center Groningen</i> <i>Stefan Knapen MD/PhD, University of Groningen, University Medical Center Groningen, Department of Psychiatry, Research School of Behavioural and Cognitive Neurosciences (BCN), Interdisciplinary Center Psychopathology and Emotion regulation (ICPE), Groningen</i> <i>Marij Zuidersma PhD, Interdisciplinary Center Psychopathology and Emotion regulation (ICPE), Department of Psychiatry, University of Groningen, University Medical Center Groningen</i> <i>Marieke Wichers PhD, Interdisciplinary Center Psychopathology and Emotion regulation (ICPE), Department of Psychiatry, University of Groningen, University Medical Center Groningen</i> <i>Harriëtte Riese PhD, Interdisciplinary Center Psychopathology and Emotion regulation (ICPE), Department of Psychiatry, University of Groningen, University Medical Center Groningen</i> <i>Ando, C. Emerencia PhD, University of Groningen, University Medical Center Groningen, University Center for Psychiatry, Interdisciplinary Center Psychopathology and Emotion Regulation (ICPE), The Netherlands</i></p>



<p>FRIDAY, JUNE 21st</p>	<p>Diurnal patterns of physical activity during daily life in depressed and non-depressed individuals</p> <p><i>Olga Minaeva MSc, University of Groningen, University Medical Center Groningen, Department of Psychiatry, Interdisciplinary Center for Psychopathology and Emotion regulation, Groningen</i> <i>Sanne Booij PhD, University of Groningen, University Medical Center Groningen, Department of Psychiatry, Interdisciplinary Center for Psychopathology and Emotion regulation, Groningen</i> <i>Marieke Wichers PhD, University of Groningen, University Medical Center Groningen, Department of Psychiatry, Interdisciplinary Center for Psychopathology and Emotion regulation, Groningen</i> <i>Harriette Riese PhD, University of Groningen, University Medical Center Groningen, Department of Psychiatry, Interdisciplinary Center for Psychopathology and Emotion regulation, Groningen</i></p> <p>Actigraphy as an objective measure for apathy in schizophrenia</p> <p><i>Michelle N. Servaas PhD Neuroimaging Center, Department of Neuroscience, University Medical Center Groningen, University of Groningen</i> <i>Claire Kos PhD, Neuroimaging Center, Department of Neuroscience, University Medical Center Groningen, University of Groningen</i> <i>Leonie Bais PhD, Neuroimaging Center, Department of Neuroscience, University Medical Center Groningen, University of Groningen</i> <i>Jan-Bernard C. Marsman PhD, Neuroimaging Center, Department of Neuroscience, University Medical Center Groningen, University of Groningen</i> <i>Henderikus Knegtering MD/PhD Neuroimaging Center, Department of Neuroscience, University Medical Center Groningen, University of Groningen ; Lentis Research, Lentis Center for Mental Health Care; Rob Giel Research Center, University Medical Center Groningen, University of Groningen</i> <i>Harriette Riese PhD, Interdisciplinary Center for Psychopathology and Emotion regulation, Department of Psychiatry, University Medical Center Groningen</i> <i>Marie-José van Tol PhD, Neuroimaging Center, Department of Neuroscience, University Medical Center Groningen, University of Groningen</i> <i>André Aleman PhD, Neuroimaging Center, Department of Neuroscience, University Medical Center Groningen, University of Groningen; Lentis Research, Lentis Center for Mental Health Care, The Netherlands; Department of Psychology, University of Groningen</i></p> <p>Mobile assessment of homeostatic regulation in activity, sleep and emotional states in the motor activity research consortium for health (mMARCH)</p> <p><i>Kathleen Merikangas PhD, Genetic Epidemiology, Research Branch, Intramural Research Program, National Institute of Mental Health, Bethesda, Maryland</i> <i>Femke Lamers PhD, Department of Psychiatry and EMGO Institute for Health and Care Research, VU University Medical Centre, Amsterdam, the Netherlands</i> <i>Lihong Cui MSc, Genetic Epidemiology, Research Branch, Intramural Research Program, National Institute of Mental Health, Bethesda, Maryland</i> <i>Mike Xiao BS, Genetic Epidemiology, Research Branch, Intramural Research Program, National Institute of Mental Health, Bethesda, Maryland</i> <i>Joel Swendsen PhD, University of Bordeaux, National Center for Scientific Research, Bordeaux, France; EPHE PSL Research University, Paris, France</i> <i>Vadim Zipunnikov PhD, Department of Biostatistics, Johns Hopkins Bloomberg School of Public Health</i></p>
--	--



<p>3:30PM - 5:00PM <i>Location: Canandaigua</i></p>	<p>Paper Session:</p> <p>1. Affective trends prior to and after drinking in an EMA protocol: An application of three-level time-varying effect modeling</p> <p><i>Michael Russell PhD, Penn State University</i> <i>Ashley N Linden-Carmichael PhD, Penn State University</i> <i>Stephanie T Lanza PhD, Penn State University</i> <i>Thomas M Piasecki PhD, University of Missouri, Columbia</i></p> <p>2. “Buzzwords”: Crowd-sourcing young adult language to capture momentary feelings of alcohol and marijuana intoxication</p> <p><i>Ashley Linden-Carmichael PhD, The Pennsylvania State University</i> <i>Loren D Masters MPH, The Pennsylvania State University</i> <i>Aaron C Luneke PhD, The Pennsylvania State University</i> <i>Stephanie T Lanza PhD, The Pennsylvania State University</i></p> <p>3. A comparison of three self-report assessments of cannabis use in recreational users</p> <p><i>Samuel Scaffido BA, Syracuse University</i> <i>Philip Santangelo PhD, Syracuse University</i> <i>Emily B Ansell PhD, Syracuse University</i></p> <p>4. Social interaction and cannabis use differentially affect self-perceived loneliness in women versus men</p> <p><i>Holly Laws PhD, University of Massachusetts - Amherst</i> <i>Emily B Ansell PhD, Syracuse University</i></p>
<p>3:30PM – 5:00PM <i>Location: Otisco</i></p>	<p>Symposium:</p> <p>Same theories, new methods: Using real-time monitoring to test theories of suicide</p> <p>Chair: Daniel Coppersmith BA <i>Harvard University</i></p> <p>Discussant: Evan Kleiman PhD <i>Rutgers University</i></p> <p>Testing the interpersonal theory of suicide using ecological momentary assessment among recently hospitalized youth</p> <p><i>Andrew C. Porter MEd, University of Rochester</i> <i>Evan M. Kleiman PhD, Rutgers University</i> <i>Linda J. Alpert-Gillis PhD, University of Rochester Medical Center</i> <i>Catherine R. Glenn PhD, University of Rochester</i></p>



<p>FRIDAY, JUNE 21st</p>	<p>How does the interpersonal theory of suicide function over hours and days? A smartphone-based real-time monitoring study</p> <p><i>Evan M. Kleiman PhD, Rutgers University</i> <i>Alexander J. Millner PhD, Harvard University</i> <i>Matthew K. Nock PhD, Harvard University</i></p> <p>Clarifying the role of negative emotions in suicidal thinking: An examination of the emotion dysregulation theory of suicide with real-time monitoring</p> <p><i>Daniel D.L. Coppersmith BA, Harvard University</i> <i>Evan M. Kleiman PhD, Harvard University</i> <i>Alexander J. Millner Ph.D., Harvard University</i> <i>Matthew K. Nock Ph.D., Harvard University</i></p> <p>Application of personalized, longitudinal networks of affective states and suicide ideation in dialectical behavioral therapy: A proof-of-concept study</p> <p><i>Shirley B. Wang BA, Harvard University</i> <i>Sarah Fischer PhD, George Mason University</i> <i>Lauren Breithaupt PhD, Massachusetts General Hospital</i></p>
<p>3:30PM - 5:00PM <i>Location: Hemlock</i></p>	<p>Paper Session:</p> <p>1. Conceptualizing and defining acceptability in mHealth research</p> <p><i>Frank Materia MS, MHS, Penn State University</i> <i>Danielle Symons Downs PhD, Penn State University</i> <i>Joshua M Smyth PhD, Penn State University</i></p> <p>2. Lowering burden in ecological momentary assessment: Measurement approaches and real-time methods to reduce participant burden</p> <p><i>Timothy R Brick PhD, The Pennsylvania State University</i></p> <p>3. Real-time monitoring in practice: How to identify pattern transitions and related precursors in human change processes</p> <p><i>Guenter Schiepek PhD, Paracelsus Medical University Salzburg, Institute of Synergetics and Psychotherapy Research</i> <i>Benjamin Aas MSc, Department of Child and Adolescent Psychiatry, Psychosomatics and Psychotherapy, University Hospital, LMU Munich</i> <i>Anna Lichtwarck-Aschoff PhD, Radboud University of Nijmegen, Behavioral Science Institute, Developmental Psychopathology</i></p> <p>4. Considering the role of the time interval in time-lagged relationships (in meta-analysis)</p> <p><i>Rebecca M. Kuiper PhD, Utrecht University, Department of Methodology & Statistics</i> <i>Oisín Ryan, Utrecht University, Department of Methodology & Statistics</i></p>



5:00PM - 6:00PM <i>Location: The Cavalier Room</i>	Social Hour: Meet & Greet with the SAA Executive Committee
7:00PM	Dinner at Beak & Skiff Apple Orchard and 1911 Tasting Room *Bus leaves Marriott @ 6:30pm (must bring ticket in order to attend)
SATURDAY, JUNE 22nd	
8:00AM – 9:00AM <i>Location: Finger Lakes Foyer</i>	Continental Breakfast
9:00AM – 10:00AM <i>Location: Skaneateles</i>	Business Meeting
10:00AM - 10:15AM <i>Location: Finger Lakes Foyer</i>	Coffee Break
10:15AM - 11:45AM <i>Location: Otisco</i>	<p>Symposium: On a personal level: Personalized ESM in clinical practice</p> <p>Chair: Inez Myin-Germeys Ph.D. <i>Center for Contextual Psychiatry, Department of Neurosciences, Leuven University</i></p> <p>Introduction on personalized ESM in clinical practice</p> <p><i>Harriëtte Riese Ph.D., Interdisciplinary Center Psychopathology and Emotion regulation (ICPE), Department of Psychiatry, UMCG</i> <i>Marieke Wichers Ph.D., Interdisciplinary Center Psychopathology and Emotion regulation (ICPE), Department of Psychiatry, UMCG</i></p> <p>Personalized treatment real-time assessment (PETRA): A flexible interface to generate a personalized diary</p> <p><i>Fionneke Bos Msc, Interdisciplinary Center Psychopathology and Emotion regulation (ICPE), Department of Psychiatry, UMCG</i> <i>Marieke Wichers PhD, Interdisciplinary Center Psychopathology and Emotion regulation (ICPE), Department of Psychiatry, UMCG</i> <i>Ando Emerencia PhD, Developmental Psychology, University of Groningen</i> <i>Wim Veling MD/PhD, University Centre Psychiatry, Department of Psychiatry, UMCG</i> <i>Benno Haarman MD/PhD, University Centre Psychiatry, Department of Psychiatry, UMCG</i> <i>Date van der Veen Msc, University Centre Psychiatry, Department of Psychiatry, UMCG</i> <i>Robert A Schoevers MD/PhD, University Centre Psychiatry, Department of Psychiatry, UMCG, Interdisciplinary Center Psychopathology and Emotion regulation (ICPE), Department of</i></p>



<p>SATURDAY, JUNE 22nd</p>	<p><i>Psychiatry, UMCG</i> <i>Erwin Veermans Msc, RoQua, Department of Psychiatry, UMCG</i> <i>Judith GM Rosmalen PhD, Interdisciplinary Center Psychopathology and Emotion regulation (ICPE), Department of Psychiatry, UMCG</i> <i>Harriëtte Riese PhD, Interdisciplinary Center Psychopathology and Emotion regulation (ICPE), Department of Psychiatry, UMCG</i></p> <p>Leveraging ESM-based feedback in mental health care: End-user perspectives and long-term sustainability</p> <p><i>Zuzana Kasanova PhD, Center for Contextual Psychiatry, Department of Neurosciences, Leuven University</i> <i>Peter Kuppens PhD, Center for Quantitative Psychology and Individual Differences, Department of Psychology and Educational Sciences, Leuven University</i> <i>Inez Myin-Germeys PhD, Center for Contextual Psychiatry, Department of Neurosciences, Leuven University</i></p> <p>Personalized feedback: The movie</p> <p><i>Laura Bringmann PhD, Psychometrics and Statistics department, University of Groningen</i> <i>Gert Stulp PhD, Department of Sociology, University of Groningen/Inter-University Center for Social Science Theory and Methodology (ICS)</i> <i>Harriëtte Riese PhD, Interdisciplinary Center Psychopathology and Emotion regulation (ICPE), Department of Psychiatry, UMCG</i> <i>Date van der Veen Msc, University Centre Psychiatry, Department of Psychiatry, UMCG</i></p>
<p>10:15AM - 11:45AM <i>Location: Cayuga</i></p>	<p>Symposium: Beyond stressor exposure: Exploring anticipation of and recovery from stressors experienced in daily life</p> <p>Chair: Andreas Neubauer Ph.D. <i>DIPF Leibniz Institute for Research and Information in Education</i></p> <p>Daily anticipatory coping with election stress</p> <p><i>Shevaun D. Neupert Ph.D., North Carolina State University</i> <i>Emily L. Smith B.A., North Carolina State University</i> <i>Jennifer A. Bellingtier Ph.D., Friedrich Schiller University Jena</i></p> <p>Morning predictions about today's subjective stress prospectively predict reporting of stressors</p> <p><i>Chelsea N. Dickens B.A., Pennsylvania State University</i> <i>Stacey B. Scott Ph.D., Stony Brook University</i> <i>Andreas B. Neubauer Ph.D., DIPF Leibniz Institute for Research and Information in Education</i> <i>Martin J. Sliwinski Ph.D., Pennsylvania State University</i></p>



	<p>Can't get them out of my head: The role of perseverative thoughts in the association of anticipatory stress and affect</p> <p><i>Andrea C. Kramer M.Sc., DIPF Leibniz Institute for Research and Information in Education</i> <i>Andreas B. Neubauer Ph.D., DIPF Leibniz Institute for Research and Information in Education</i> <i>Florian Schmiedek Ph.D., DIPF Leibniz Institute for Research and Information in Education</i> <i>Stacey B. Scott Ph.D., Stony Brook University</i> <i>Joshua M. Smyth Ph.D., Pennsylvania State University</i> <i>Martin J. Sliwinski Ph.D., Pennsylvania State University</i></p> <p>Identifying the time course of emotional responding and recovery to everyday stressors in breast cancer survivors</p> <p><i>Giancarlo Pasquini B.A., Stony Brook University</i> <i>Erica D. Diminich Ph.D., Stony Brook University</i> <i>Brent J. Small Ph.D., University of South Florida</i> <i>Stacey B. Scott Ph.D., Stony Brook University</i></p>
<p>10:15AM - 11:45AM <i>Location: Hemlock</i></p>	<p>Symposium: Natural language use and social processes</p> <p>Chair: Andrea Horn Ph.D. <i>University of Zurich</i></p> <p>Fluctuations in pronoun use in couples' everyday conversations: Links with dating aggression</p> <p><i>Adela Timmons Ph.D., Florida International University</i> <i>Sohyun Han M.A., University of Southern California</i> <i>Yehsong Kim B.A., University of Southern California</i> <i>Gayla Margolin Ph.D., University of Southern California</i></p> <p>A comparison of everyday word use of people in lesbian, gay, and heterosexual couples</p> <p><i>Megan L. Robbins PhD, University of California</i> <i>Alexander Karan M.A., University of California</i></p> <p>Lost in translation? How psychological signatures in language use are morphed by gender during translation</p> <p><i>Tabea Meier M.Sc., University of Zurich</i> <i>Ryan L. Boyd Ph.D., University of Texas</i> <i>James W. Pennebaker Ph.D., University of Texas</i> <i>Mike Martin Ph.D., University of Zurich</i> <i>Markus Wolf Ph.D., University of Zurich</i> <i>Andrea B. Horn Ph.D., University of Zurich</i></p>



SATURDAY, JUNE 22nd 10:15AM - 11:45AM <i>Location: Canandaigua</i>	<p>Paper Session:</p> <p>1. Immediate and sustained symptom reduction for brief, app-based depression intervention</p> <p><i>Matthew Fuller-Tyszkiewicz Ph.D., Deakin University</i> <i>Nicole Everitt B.S., Deakin University</i> <i>Jaclyn Broadbent Ph.D., Deakin University</i> <i>Ben Richardson Ph.D., Deakin University</i></p> <p>2. Counseling-plus-ecological momentary intervention to reduce sexual and reproductive health risk in depressed young women: Pilot with 3-month follow-up</p> <p><i>Lydia Shrier MD/MPH, Boston Children's Hospital/Harvard Medical School</i> <i>Pamela J Burke Ph.D./RN, Boston Children's Hospital and Northeastern University</i> <i>Sarah Parker MSN/RN/FNP, Boston Children's Hospital</i> <i>Cassandra Jonestrask B.A., Boston Children's Hospital</i> <i>Rori Edwards RN, Boston Children's Hospital</i> <i>Sion Kim Harris Ph.D., Boston Children's Hospital and Harvard Medical School</i></p> <p>3. Assessing and enhancing emotional competence for well-being (ECoWeB) in the young: Concept and first pilot results</p> <p><i>Benjamin Aas M.Sc., Department of Child and Adolescent Psychiatry, Psychosomatics and Psychotherapy, University Hospital, LMU Munich</i> <i>Tabea Rosenkranz Ph.D., Clinical Psychology and Psychological Treatment, Department of Psychology, LMU Munich</i> <i>Varinka Voigt Ph.D., Department of Child and Adolescent Psychiatry, Psychosomatics and Psychotherapy, University Hospital, LMU Munich</i> <i>Gerd Schulte-Körne MD, Department of Child and Adolescent Psychiatry, Psychosomatics and Psychotherapy, University Hospital, LMU Munich</i></p> <p>4. Time well spent: The efficacy of interventions for more intentional smartphone usage</p> <p><i>Robert Montgomery B.F.A., CSU Northridge</i> <i>Abraham M Rutchick Ph.D., CSU Northridge</i></p>
---	---



<p>12:00PM - 1:30PM <i>Location: Otisco</i></p>	<p>Symposium: The promise and perils of integrating wearable sensors into research on suicidal thoughts, behaviors, and their risk factors</p> <p>Chair: Evan Kleiman Ph.D. <i>Rutgers University</i></p> <p>Analytical methods for making sense of mobile health data in suicide research</p> <p><i>Walter Dempsey Ph.D., Harvard University</i> <i>Ashley Walton Ph.D., Harvard University</i> <i>Evan M. Kleiman Ph.D., Rutgers University</i> <i>Susan Murphy Ph.D., Harvard University</i> <i>Matthew K. Nock Ph.D., Harvard University</i></p> <p>Can biosensors provide new insights into the functions of suicidal thinking?</p> <p><i>Daniel D.L. Coppersmith B.A., Harvard University</i> <i>Evan M. Kleiman Ph.D., Rutgers University</i> <i>Alexander J. Millner Ph.D., Harvard University</i> <i>Szymon Fedor Ph.D., MIT</i> <i>Rosalind W. Picard Sc.D., MIT</i> <i>Jeff C. Huffman MD, Harvard Medical School</i> <i>Matthew K. Nock Ph.D., Harvard University</i></p> <p>Using wearable monitors to detect distress among suicidal adolescent inpatients</p> <p><i>Evan M. Kleiman Ph.D., Rutgers University</i> <i>Alexander J. Millner Ph.D., Harvard University</i> <i>Victoria W. Joyce B.A., Franciscan Children's Hospital</i> <i>Carol C. Nash M.S., Franciscan Children's Hospital</i> <i>Ralph J. Buonopane Ph.D., Franciscan Children's Hospital</i> <i>Matthew K. Nock Ph.D., Harvard University</i></p>
<p>12:00PM - 1:30PM <i>Location: Canandaigua</i></p>	<p>Symposium: Improving daily life resilience and adaptive functioning in clinical practice using the experience sampling method</p> <p>Chair & Discussant: Philippe Delespaul Ph.D. <i>Department of Psychiatry and Neuropsychology, Faculty of Health Medicine and Lifesciences, Maastricht University and Mondriaan Mental Health Trust, Department of Adult Psychiatry</i></p> <p>The therapist in your pocket: Hype or standard practice?</p> <p><i>Philippe A. E. G. Delespaul Ph.D., Department of Psychiatry and Neuropsychology, Faculty of Health Medicine and Lifesciences, Maastricht University and Mondriaan Mental Health Trust, Department of Adult Psychiatry</i></p>



<p>SATURDAY, JUNE 22nd</p>	<p>Re-design of PsyMate™ for family medicine: co-creation with healthcare professionals</p> <p><i>Naomi E.M. Daniëls MSc, Department of Psychiatry and Neuropsychology, Faculty of Health, Medicine and Life Sciences, Maastricht University and Department of Family Medicine, Faculty of Health, Medicine and Life Sciences, Maastricht University</i></p> <p><i>Laura M.J. Hochstenbach Ph.D., Faculty of Health, Zuyd University of Applied Sciences</i></p> <p><i>Marloes A. van Bokhoven Ph.D., Department of Family Medicine, Faculty of Health, Medicine and Life Sciences, Maastricht University</i></p> <p><i>Anna J. Beurskens Ph.D., Department of Family Medicine, Faculty of Health, Medicine and Life Sciences, Maastricht University and Research Centre for Autonomy and Participation for People with a Chronic Illness, Faculty of Health, Zuyd University of Applied Sciences</i></p> <p><i>Philippe A.E.G. Delespaul Ph.D., Department of Psychiatry and Neuropsychology, Faculty of Health Medicine and Lifesciences, Maastricht University, Maastricht, the Netherlands and Mondriaan Mental Health Trust, Department of Adult Psychiatry</i></p> <p>Cognition in daily life – how to unravel momentary variation?</p> <p><i>Simone J.W. Verhagen MSc, Department of Psychiatry and Neuropsychology, Faculty of Health, Medicine and Life Sciences, Maastricht University,</i></p> <p><i>Sara L. Bartels MSc, Department of Psychiatry and Neuropsychology, Faculty of Health Medicine and Lifesciences, Maastricht University and Alzheimer Centre Limburg, School for Mental Health and Neuroscience, Maastricht University,</i></p> <p><i>Naomi E.M. Daniels MSc, Department of Psychiatry and Neuropsychology, Faculty of Health Medicine and Lifesciences, Maastricht University and Department of Family Medicine, Faculty of Health, Medicine and Life Sciences, Maastricht University,</i></p> <p><i>Claudia J.P. Simons PhD, Department of Psychiatry and Neuropsychology, Faculty of Health, Medicine and Life Sciences, Maastricht University</i></p> <p><i>Philippe A.E.G. Delespaul PhD, Department of Psychiatry and Neuropsychology, Faculty of Health Medicine and Lifesciences, Maastricht University and Mondriaan Mental Health Trust, Department of Adult Psychiatry</i></p>
<p>12:00PM - 1:30PM <i>Location: Cayuga</i></p>	<p>Paper Session:</p> <p>1. Implementing the electronically activated recorder to illustrate real-world social dysfunction in schizophrenia</p> <p><i>Kyle Minor Ph.D., Indiana University - Purdue University Indianapolis</i></p> <p><i>Danielle M Beaudette B.A., Indiana University - Purdue University Indianapolis</i></p> <p><i>Kathryn L Hardin MS, Indiana University - Purdue University Indianapolis</i></p> <p><i>Anna L White Undergraduate Research Assistant, Indiana University - Purdue University Indianapolis</i></p> <p><i>Megan L Robbins Ph.D., University of California – Riverside</i></p> <p>2. Is infant crying in the ear of the beholder? Examining the relationship between mothers' perceptions of daily infant crying and maternal depression</p> <p><i>Megan Micheletti BS, The University of Texas at Austin</i></p> <p><i>Xuewen Yao MS, The University of Texas at Austin</i></p> <p><i>Mckensey Johnson MS, The University of Texas at Austin</i></p> <p><i>Kaya de Barbaro Ph.D, The University of Texas at Austin</i></p>



	<p>3. Perseverative cognition, distracted communication, and well-being in everyday social interaction</p> <p><i>Andy Merolla Ph.D., University of California, Santa Barbara</i> <i>Jeffrey A Hall Ph.D., University of Kansas</i> <i>Quinten Bernhold MA, University of California, Santa Barbara</i></p> <p>4. Methods to assess social comparisons within persons over time: A rapid review</p> <p><i>Danielle Arigo Ph.D., Rowan University</i> <i>Megan M Brown B.S., Rowan University</i> <i>Jacqueline A Mogle Ph.D., Pennsylvania State University</i> <i>Kristen Pasko B.S., Rowan University</i> <i>Logan Sweeder B.S., Pennsylvania State University</i> <i>Joshua M. Smyth, Ph.D., Penn State University</i></p>
<p>12:00PM - 1:30PM <i>Location: Hemlock</i></p>	<p>Paper Session:</p> <p>1. Assessing daily subjective cognition: Distinguishing memory and attention problems from overall cognitive functioning</p> <p><i>Jacqueline Mogle Ph.D., Pennsylvania State University</i> <i>Nikki Hill Ph.D., Pennsylvania State University</i> <i>Martin Sliwinski Ph.D., Pennsylvania State University</i></p> <p>2. Is fibrofog related to pain? Differences in the association between momentary pain and cognitive functioning for those with and without fibromyalgia</p> <p><i>Anna Kratz Ph.D., University of Michigan</i> <i>Daniel Whibley Ph.D., University of Michigan</i> <i>Daniel Clauw Ph.D., University of Michigan</i> <i>Martin Sliwinski Ph.D., Pennsylvania State University</i> <i>David A Williams Ph.D., University of Michigan</i></p> <p>3. First evidence on the feasibility of an experience sampling study investigating patients with an acquired brain injury</p> <p><i>Saskia Forster M.Sc., Department of Medical Psychology and Medical Sociology, Medical Faculty, RWTH Aachen University</i> <i>Siegfried Gauggel Ph.D., Department of Medical Psychology and Medical Sociology, Medical Faculty, RWTH Aachen University</i> <i>Volker Völzke Dr. rer. medic. Dipl.-Psych.; Helios Klinik Hattingen</i> <i>Verena Mainz PD Dr. rer. medic. Dipl.-Psych.; Department of Medical Psychology and Medical Sociology, Medical Faculty, RWTH Aachen University</i></p> <p>4. Ecological momentary assessment versus retrospective assessment for measuring change in health-related quality of life following cardiac intervention</p> <p><i>Tom TH Oreel MSc, Department of Medical Psychology, Amsterdam University Medical Centers, Location Academic Medical Center, University of Amsterdam, Amsterdam Public Health Research Institute</i> <i>Philippe P.A. Delespaul PhD, Department of Psychiatry and Psychology, Maastricht University</i></p>



Medical Center, School for Mental Health and Neuroscience
Iris I.D. Hartog MSc, Department of Medical Psychology, Amsterdam University Medical Centers, Location Academic Medical Center, University of Amsterdam, Amsterdam Public Health Research Institute | Faculty of Philosophy, Theology and Religious Studies, Radboud University Nijmegen
José J.P.S. Henriques MD PhD, Department of Cardiology, Amsterdam University Medical Centers, Location Academic Medical Center, University of Amsterdam
Justine J.E. Netjes MSc, Department of Medical Psychology, Amsterdam University Medical Centers, Location Academic Medical Center, University of Amsterdam, Amsterdam Public Health Research Institute
Dr. Alexander B.A. Vonk, MD PhD, Department of Cardio-thoracic surgery, Amsterdam University Medical Centers, Location VU University Amsterdam
Jorrit Lemkes MD, Department of Cardiology, Amsterdam University Medical Centers, Location VU University Amsterdam
Dr. Michael Scherer-Rath PhD, Faculty of Philosophy, Theology and Religious Studies, Radboud University Nijmegen
Prof. dr. Hanneke W.M. van Laarhoven MD PhD, Department of Medical Oncology, Cancer Center Amsterdam, Amsterdam University Medical Centers, Location Academic Medical Center, University of Amsterdam, University of Amsterdam
Prof. dr. Mirjam A.G. Sprangers PhD, Department of Medical Psychology, Amsterdam University Medical Centers, Location Academic Medical Center, University of Amsterdam, Amsterdam Public Health Research Institute
Dr. Pythia T. Nieuwkerk PhD, Department of Medical Psychology, Amsterdam University Medical Centers, Location Academic Medical Center, University of Amsterdam, Amsterdam Public Health Research Institute

5. An examination of the natural occurrence of upward body-focused comparison cognitive responses using an ecological momentary assessment study

Rachel MacIntyre MS, Virginia Consortium Program in Clinical Psychology
Kristin E Heron PhD, Old Dominion University
Danielle R Arigo PhD, Rowan University
Abby L Braitman PhD, Old Dominion University



Posters

1. A dynamic network approach to unravel micro-coded parent-child interaction

Nadja Bodner, Master, KU Leuven; Guy Bosmans PhD, KU Leuven; Francis Tuerlinckx PhD, KU Leuven; Eva Ceulemans PhD, KU Leuven

2. Indivi: Personalizing feedback for study participants at scale

Florian Fischer MA, University of Zurich; Chat Wacharamanotham PhD, University of Zurich; Andrea B. Horn PhD, University of Zurich

3. Optimizing remote study recruitment and compliance using videos for an online daily diary study of sexual minority women: An experimental design

Kristin Heron PhD, Old Dominion University and Virginia Consortium Program in Clinical Psychology; Abby L Braitman PhD, Old Dominion University and Virginia Consortium Program in Clinical Psychology; Robin J Lewis PhD, Old Dominion University and Virginia Consortium Program in Clinical Psychology; Charlotte A Dawson BA, Virginia Consortium Program in Clinical Psychology; Lindsay M Howard MS, Virginia Consortium Program in Clinical Psychology; Rachel I. MacIntyre MS, Virginia Consortium Program in Clinical Psychology

4. A comparison of signal- and event-contingent ambulatory assessment of interpersonal behavior and affect in social situations

Philip Himmelstein BPhil, University of Pittsburgh; William C Woods, Masters of Psychology, University of Pittsburgh; Aidan G.C. Wright, Doctor of Philosophy, University of Pittsburgh

5. Having purpose during recovery: Are daily fluctuations in affect and social experiences associated with eudaimonic wellbeing during opioid treatment?

Kyler S Knapp BS, The Pennsylvania State University; H. H. Cleveland PhD, The Pennsylvania State University; Timothy R. Brick PhD, The Pennsylvania State University; Scott C. Bunce PhD, The Pennsylvania State University

6. Within-subject dynamics of affect in adolescents daily life's: Factor structure and psychometric properties

Matthias Limberger M.A., Mental mHealth Lab, Karlsruhe Institute of Technology (KIT); Florian Schmiedek Prof.Dr., German Institute for International Educational Research (DIPF); Heike Tost Prof.Dr., Central Institute of Mental Health (CIMH); Andreas Meyer-Lindenberg Prof. Dr., Central Institute of Mental Health (CIMH); Gabriele Gan Dr., Central Institute of Mental Health (CIMH)

7. Can patterns of daily life experience and behaviour prospectively predict depression in adolescence and young adulthood? Results of the BeMIND study

Lars Pieper PhD., Behavioral Epidemiology, Institute of Clinical Psychology and Psychotherapy, Technische Universität Dresden; Esther Seidl M.Sc.- Psych., Behavioral Epidemiology, Institute of Clinical Psychology and Psychotherapy, Technische Universität Dresden; John Venz M.Sc.- Math., Behavioral Epidemiology, Institute of Clinical Psychology and Psychotherapy, Technische Universität Dresden; Catharina Voss M.Sc.- Psych., Behavioral Epidemiology, Institute of Clinical Psychology and Psychotherapy, Technische Universität Dresden; Katja Beesdo-Baum Prof. Dr., Behavioral Epidemiology, Institute of Clinical Psychology and Psychotherapy, Technische Universität Dresden



8. Constructing a reward-related quality of life function in daily life -a proof of concept study-

Simone Verhagen MSc, Department of Psychiatry and Neuropsychology, Faculty of Health Medicine and Lifesciences, Maastricht University, Maastricht, the Netherlands; Claudia J.P. Simons PhD, Department of Psychiatry and Neuropsychology, Faculty of Health Medicine and Lifesciences, Maastricht University, Maastricht, the Netherlands; Catherine van Zelst PhD, Department of Psychiatry and Neuropsychology, Faculty of Health Medicine and Lifesciences, Maastricht University, Maastricht, the Netherlands; Philippe A.E.G. Delespaul PhD, Department of Psychiatry and Neuropsychology, Faculty of Health Medicine and Lifesciences, Maastricht University, Maastricht, the Netherlands

9. Ecological momentary assessment of social experiences: Patient feedback on social constructs and item clarity

Danielle Arigo Ph.D., Rowan University and Rowan School of Osteopathic Medicine; Megan M Brown B.S., Rowan University; Adarsh K Gupta D.O., Rowan School of Osteopathic Medicine

10. Self-esteem fluctuations in daily life: The roles of daily hassles, mental health and selected personality traits

Lara Mey M.Sc., Deutsches Resilienz Zentrum; Andrea Chmitorz Dr., Deutsches Resilienz Zentrum; Raffael Kalisch Prof., Neuroimaging Center (NIC), Johannes Gutenberg University Medical Center; Oliver Tüscher Prof., Department of Psychiatry and Psychotherapy, Johannes Gutenberg University Medical Center; Thomas Kubiak Prof. Health Psychology, Institute for Psychology, Johannes Gutenberg University

11. Ecological momentary assessment of premenstrual symptoms

Emma N Cleary B.A., Syracuse University, Philip S Santangelo Ph.D., Syracuse University, Emily B Ansell Ph.D., Syracuse University

12. Ecological momentary assessment of PTSD symptoms and smoking in combat veterans with risky drinking

Kimberly Barrie MPH, MSW, VA Center for Integrated Healthcare; Kyle Possemato Ph.D., VA Center for Integrated Healthcare; Michael Wade M.S., VA Center for Integrated Healthcare

13. Data-driven AA protocols: Closing the automation loop between data collection and protocol (re)configuration in a AA software system

Nikolaos Batalas PDeng, Eindhoven University of Technology; Bas Willemse; Vassilis J Khan; Panos Markopoulos

14. Experience sampling with ambulatory physiological monitoring reveals the scale of variation in affective experience

*Katie Hoemann M.A., Northeastern University; Zulqarnain Khan, Northeastern University; Catie Nielson, Northeastern University; Madeleine Devlin, Northeastern University; Mallory Feldman, Northeastern University; Jennifer Dy Ph.D., Northeastern University; Jolie B. Wormwood Ph.D., University of New Hampshire; Lisa Feldman Barrett Ph.D., Northeastern University; Karen S. Quigley Ph.D., Northeastern University**indicates presenter**



15. Daily stress predicts level of fatigue among breast cancer survivors independent of cancer-related distress

Giancarlo Pasquini B.A., Stony Brook University; Brent J Small Ph.D., University of South Florida; Stacey B Scott Ph.D., Stony Brook University

16. Healthy or still anxious? How adolescents with remitted anxiety disorders experience everyday life

Esther Seidl M.Sc., Behavioral Epidemiology, Institute of Clinical Psychology and Psychotherapy, Technische Universität Dresden, Dresden, Germany; Lars Pieper Ph.D., Behavioral Epidemiology, Institute of Clinical Psychology and Psychotherapy, Technische Universität Dresden, Dresden, Germany; John Venz M.Sc., Behavioral Epidemiology, Institute of Clinical Psychology and Psychotherapy, Technische Universität Dresden, Dresden, Germany; Katja Beesdo-Baum Prof., Behavioral Epidemiology, Institute of Clinical Psychology and Psychotherapy, Technische Universität Dresden, Dresden, Germany

17. Heart and mind: How the heart rate is connected to psychological states in daily life

Monique Zenker M.Sc., TU Dresden, Institute of Clinical Psychology and Psychotherapy, Chair of Behavioural Epidemiology; John Venz M.Sc., TU Dresden, Institute of Clinical Psychology and Psychotherapy, Chair of Behavioural Epidemiology; Lars Pieper Dr. rer. Nat., TU Dresden, Institute of Clinical Psychology and Psychotherapy, Chair of Behavioural Epidemiology; Catharina Voß M.Sc., TU Dresden, Institute of Clinical Psychology and Psychotherapy, Chair of Behavioural Epidemiology; Katja Beesdo-Baum Prof. Dr. rer. nat. habil., TU Dresden, Institute of Clinical Psychology and Psychotherapy, Chair of Behavioural Epidemiology

18. Investigating the interrelationships of sleep, emotion, and the HPA axis using mobile technologies in a community-based sample

Katharina Clore-Gronenborn B.A., NIMH; Cleveland Clinic Lerner College of Medicine of Case Western Reserve University

19. Using a novel ambulatory paradigm to investigate perseverance in problem solving

Madeleine Devlin BA, Northeastern University; Mallory Feldman BA, Northeastern University; Zulqarnain Khan, Graduate Student, Northeastern University; Catie Nielson, Graduate Student, Northeastern University; Katie Hoemann, Graduate Student, Northeastern University; Jennifer Dy PhD, Northeastern University; Jolie B. Wormwood PhD, University of New Hampshire, Edith Nourse Rogers Memorial Veterans Hospital; Lisa Feldman Barrett PhD, Northeastern University, Massachusetts General Hospital/Martinos Center for Biomedical Imaging ; Karen S. Quigley PhD, Northeastern University, Edith Nourse Rogers Memorial Veterans Hospital

20. Real time mobile monitoring of emotional reactivity and stability in adults with social anxiety disorder

Beth Foote BS, National Institute of Mental Health; Mike Xiao BS, National Institute of Mental Health; Vadim Zipunnikov PhD, Johns Hopkins Bloomberg School of Public Health; Lihong Cui MS, National Institute of Mental Health; Kathleen Merikangas PhD, National Institute of Mental Health



21. Cognition in daily life – how to unravel momentary variation?

Naomi E.M. Daniëls MSc, Department of Psychiatry and Neuropsychology, Faculty of Health Medicine and Lifesciences, Maastricht University; Simone J.W. Verhagen MSc, Department of Psychiatry and Neuropsychology, Faculty of Health Medicine and Lifesciences, Maastricht University; Sara L. Bartels MSc, Department of Psychiatry and Neuropsychology, Faculty of Health Medicine and Lifesciences, Maastricht University; Karel W.H. Borkelmans, Department of Psychiatry and Neuropsychology, Faculty of Health Medicine and Lifesciences, Maastricht University; Philippe A.E.G. Delespaul PhD, Department of Psychiatry and Neuropsychology, Faculty of Health Medicine and Lifesciences, Maastricht University

22. The effects of music listening on somatic symptoms and stress: A comparative ambulatory assessment study with two patient samples

Anja C. Feneberg MSc, Clinical Psychology of Adulthood, Department of Psychology, University of Vienna; Ricarda Mewes PhD, Outpatient Unit for Research, Teaching and Practice, Faculty of Psychology, University of Vienna; Johanna M. Doerr PhD, Department of Neurology, University Hospital Gießen and Marburg; Nadine Skoluda PhD, Clinical Psychology of Adulthood, Department of Psychology, University of Vienna; Urs M. Nater PhD, Clinical Psychology of Adulthood, Department of Psychology, University of Vienna

23. Sociomarkers of anhedonia in MDD

Vera Ellen Heininga PhD, University of Groningen

24. Self-efficacy coaching based on ambulatory monitoring for adolescent occupational rehabilitants: First results

*Anna M Morass MSc, Catholic University of Eichstaett-Ingolstadt; *Prof. Dr. Joachim Thomas, Catholic University of Eichstaett-Ingolstadt*

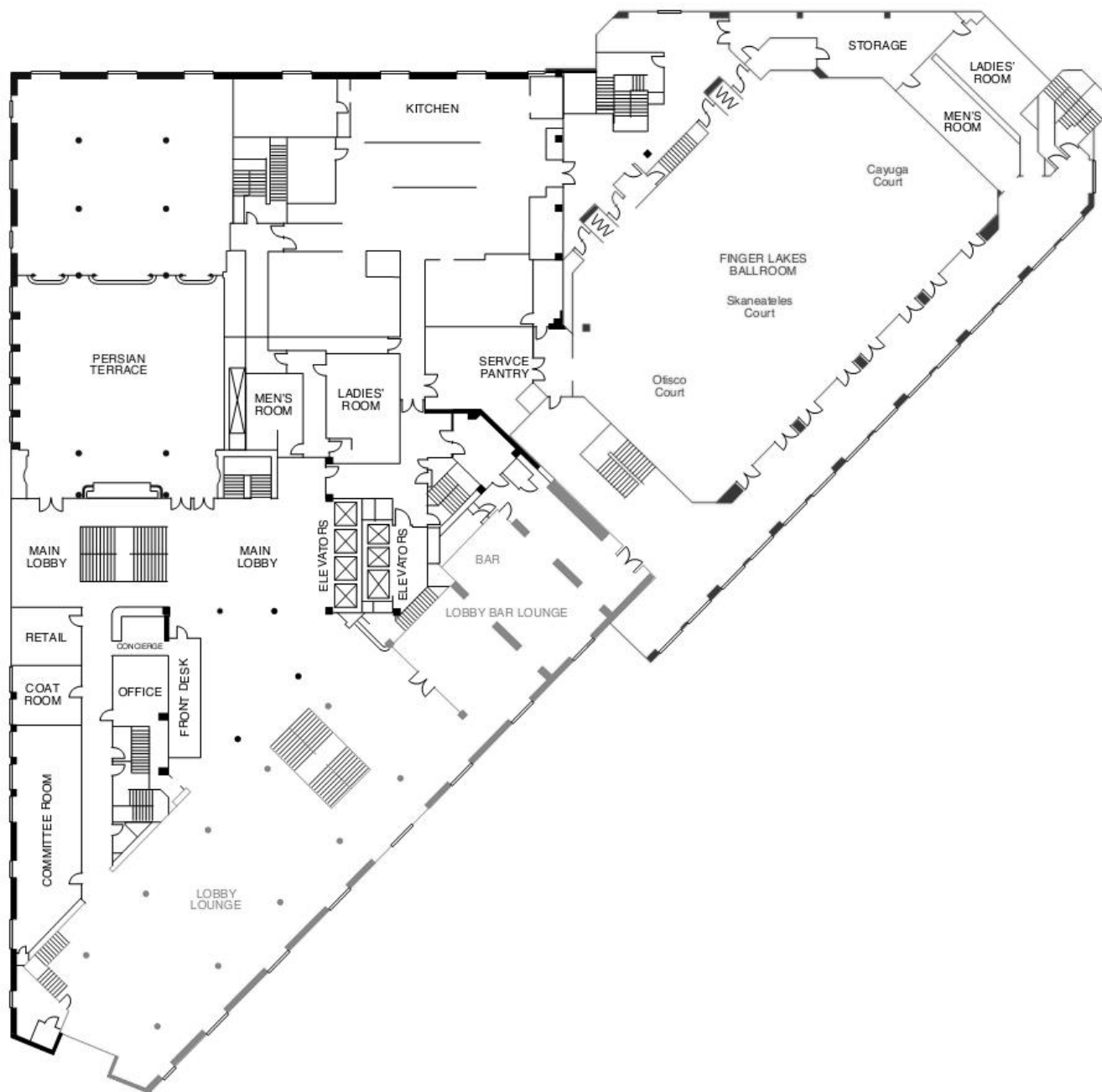
25. Correlates of mindfulness in daily life: An ambulatory assessment study on intervention effects

Regina Franziska Riepl MSc, Catholic University of Eichstaett-Ingolstadt; Joachim Thomas PhD, Catholic University of Eichstaett-Ingolstadt



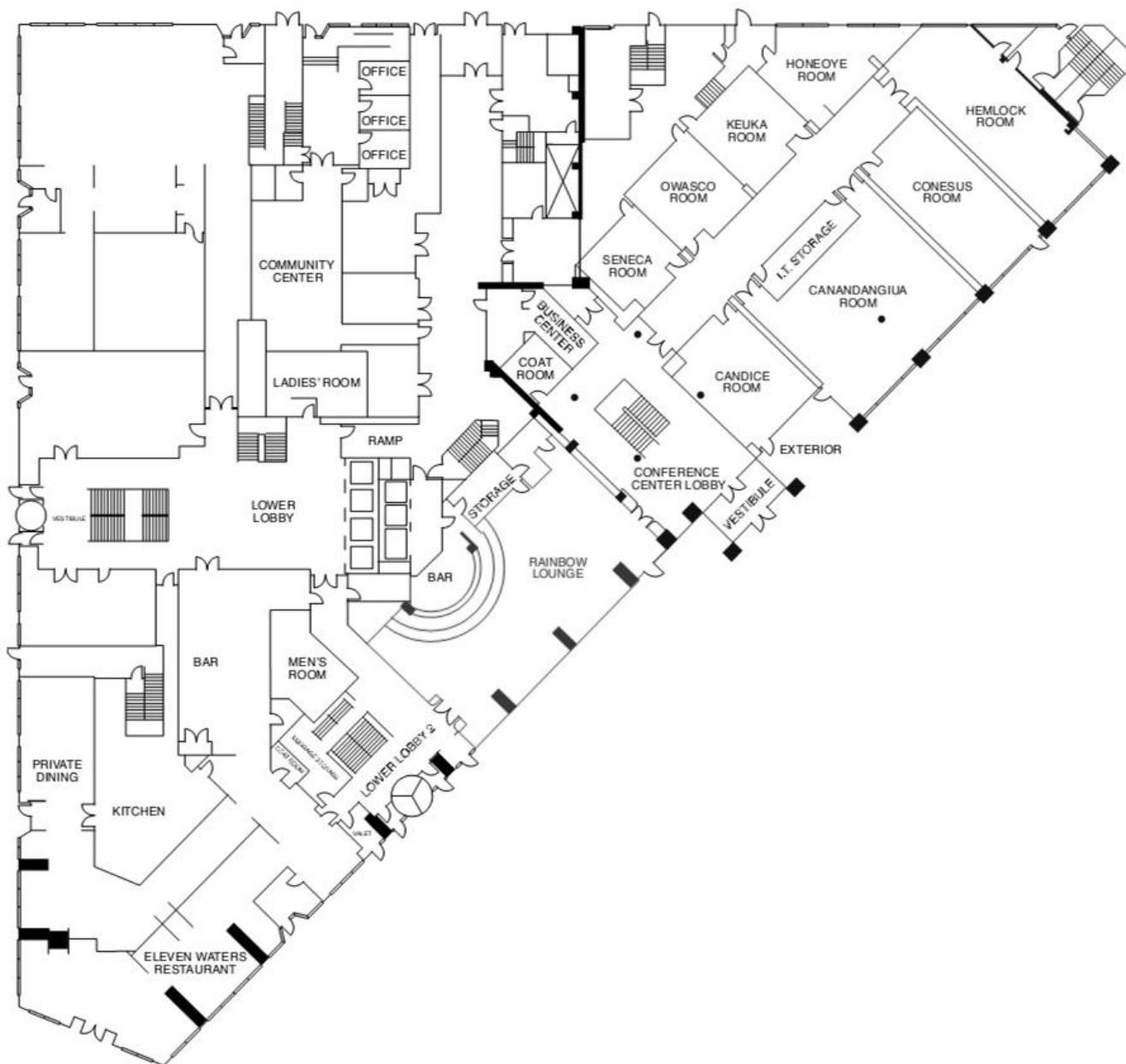
Marriot Map

Lobby Floor





First Floor

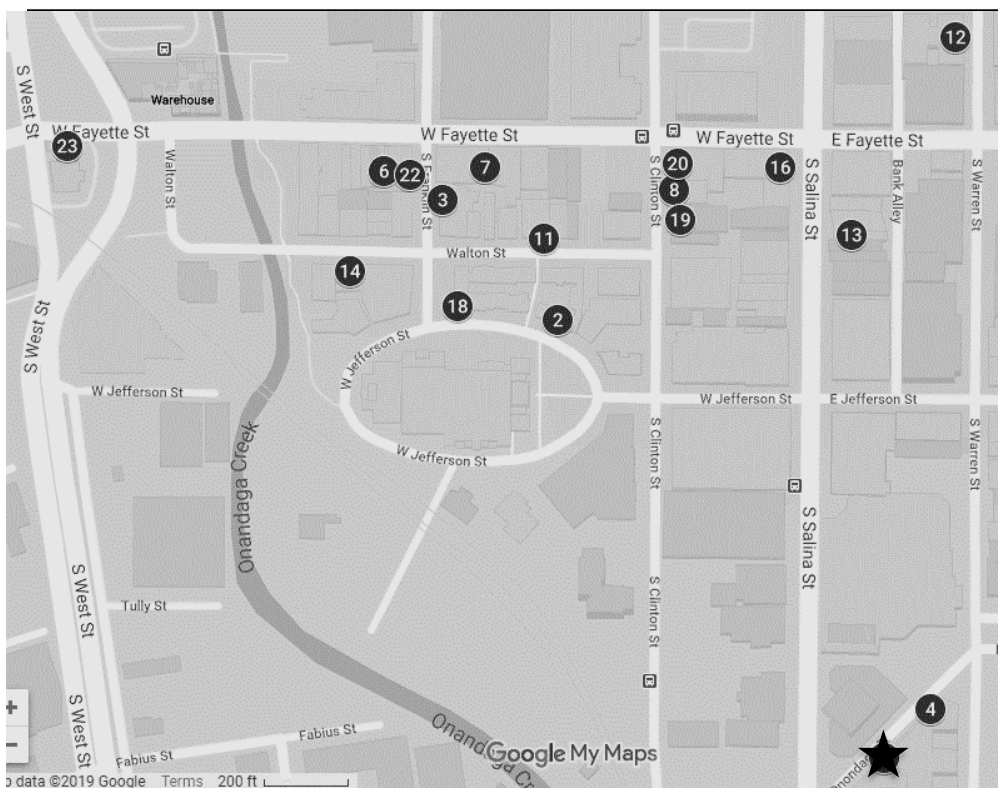
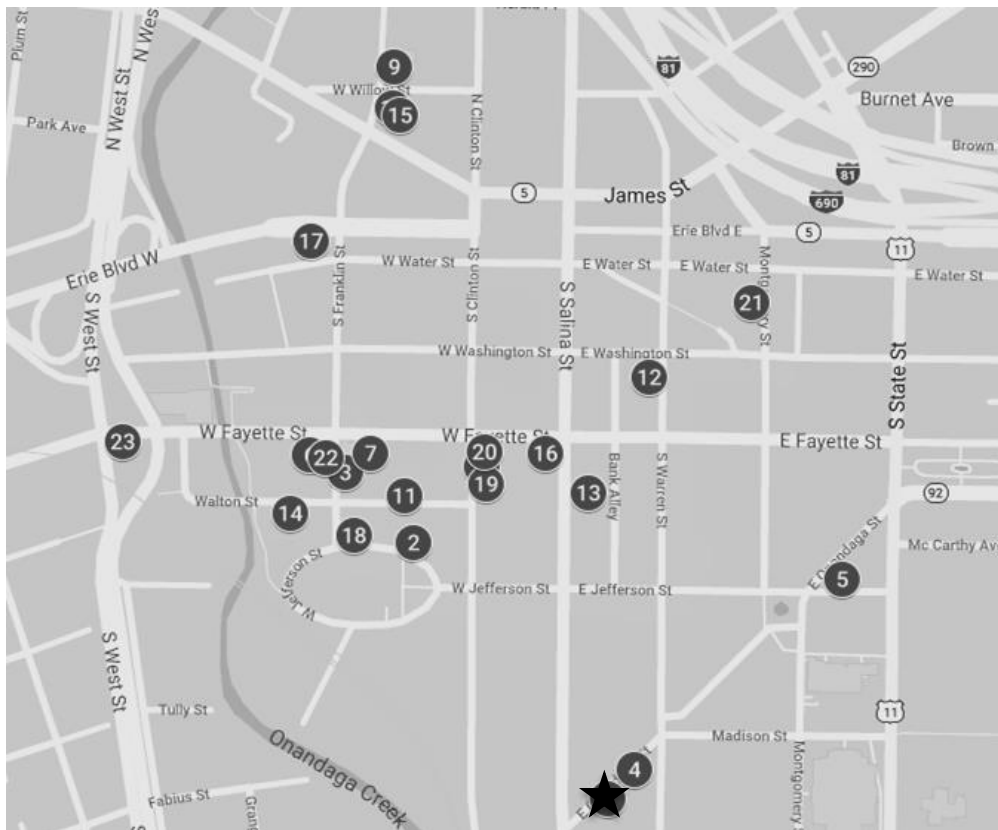




Nearby Restaurants & Bars

★ Marriott Syracuse Downtown

- ② Lemon Grass Restaurant
- ③ Pastabilities
- ④ Eleven Waters
- ⑤ The Mission Restaurant
- ⑥ The Stoop Kitchen
- ⑦ The York
- ⑧ Funk 'n Waffles
- ⑨ Dinosaur Bar-B-Que
- ⑩ Apizza Regionale
- ⑪ Empire Brewing Company
- ⑫ Otro Cinco
- ⑬ Oh My Darling
- ⑭ Sakana-Ya
- ⑮ Bamboo House
- ⑯ Original Grain
- ⑰ Cafe Kubal Creekwalk Commons
- ⑱ Starbucks
- ⑲ Al's Wine & Whiskey Lounge
- ⑳ Clinton Street Pub
- ㉑ Wolff's Biergarten
- ㉒ Kitty Hoyne's Irish Pub
- ㉓ Wunderbar





Notes